



| **THE ARMORY SHOW 2016**

KAPWANI KIWANGA

ARMORY SHOW COMMISSIONED ARTIST 2016

**GALERIE JEROME POGGI, PARIS
GALERIE TANJA WAGNER, BERLIN**

BOOTH #556

Born in Hamilton (Canada) in 1978, Kapwani Kiwanga lives and works in Paris (France). Her early training in anthropology at McGill University in Montreal stands at the core of her practice, Kiwanga often works with various sources and existing material she compiles whilst researching. Although she incorporates social sciences' methodology in her installations, performances and videos, Kiwanga's works intend to propose a more subjective and fictional observation of culture. Among others, a good example of this fictional approach is her *Afrogalactica* trilogy project. It is a series of lecture-performances where she incorporates an anthropologist from the future, a character Kapwani invented to enable her to enquire into the concept of Afrofuturism, an aesthetic that critiques, revises and re-examines the past from a African or African diasporic subjectivity.

Anthropological research as well as archives and literature lay the foundations of Kiwanga's work. In two recent shows; *Jeu de Paume* in Paris and the South London Gallery, Kiwanga introduces us to her specific interest on the notions of the magical and the supernatural. The first exhibition *Maji Maji*, looked at the historical account of this war of the same name between 1905 and 1907. One of the largest uprisings on the African continent it was initiated by a spiritual medium named Kinjeketile. Fueled by prophecies, this historical event in what is now present day Tanzania was a rebellion against the German colony established in East Africa... *Kinjeketile Suite* exhibited in London traced how historical accounts weigh on a nation's identity even long after their occurrence.

In the joint Poggi/Wagner presentation, artist Kiwanga presents a series of new pieces inspired by sisal. Sisal is a species of Agave native to southern Mexico but widely cultivated and naturalized in many other countries: Brazil, China and in East Africa (Kenya, Tanzania and Madagascar). Its leaves yield a creamy white, long and stiff fiber that is traditionally used for rope, twine, paper, cloth, carpets and many other uses. More recently sisal has been increasingly used in the building industry for plaster reinforcement and in the car industry for plastic products. Brazil is the largest producer of sisal fibers where the plant is grown mostly by small-scale farmers. In east African countries, on the contrary, the fiber is produced on large scale commercial plantations and mostly dedicated to exportation. While visiting her family in the region of Morogoro, Kiwanga encountered sisal plantations and its economic importance to Tanzania. From 1893 when it was first introduced by the Germans until the present day, sisal is one of the longest surviving agricultural industries in the country.

Kiwanga has conceived an installation which lies close to the floor on a plinth. Composed of various documents such as Agave leaves from the Herbarium collection from the Natural History Museum of Paris, technical drawings depicting decortication machines and other archives from the beginning of sisal's industrialization. On the wall hang three pieces made with raw fiber. Suspended on metal bars, the sisal evokes a certain anthropomorphism at first sight, as well as second impression of strong artificiality. What seems to refer to a certain *Arte povera* gestalt appears at first glance as a series of manufactured bleached blond wigs. Referring to drying grounds where workers lay wet sisal fiber after the decortication process, Kapwani turns the raw material into a sophisticated ornamental element. Kiwanga explores sisal in a vast spectrum, looking at its value from economical to cultural paradigmas. The highly manufactured material used for the support of the sisal creates an obvious discrepancy. Still the sisal remains a product of rural agriculture, a cash crop, grown for sale to return a profit.

Armory show 2016 features Kapwani Kiwanga's work with commissioned pieces and limited edition benefiting Moma. Along her show with gallerists Poggi and Wagner (Berlin), she presents an installation entitled *The Secretary's Suite* that investigates the complexities of gift economies. It emerges from a picture taken in 1961 from the office of the United Nations Secretary General. In addition, visitors will be able to bring home a series of prints referring to gifts given throughout history. Along with her on-site commission, Kiwanga will create a limited edition screen print benefiting The Museum of Modern Art of New York. (Text by Estelle Nabeyrat)

White Gold II, 2016

Waxed Steel, sisal Fiber

Approximatively 175 x 170 cm

Unique

Courtesy Kapwani Kiwanga and Galerie Jérôme Poggi, Paris



Drying Field, 2016

Painted wood, cotton string, sisal Fiber

Approximatively 250 x 180 cm

Unique



Fallow 2016
Waxed Steel, Sisal Fiber
Approximatively 160 x 100 cm
Unique



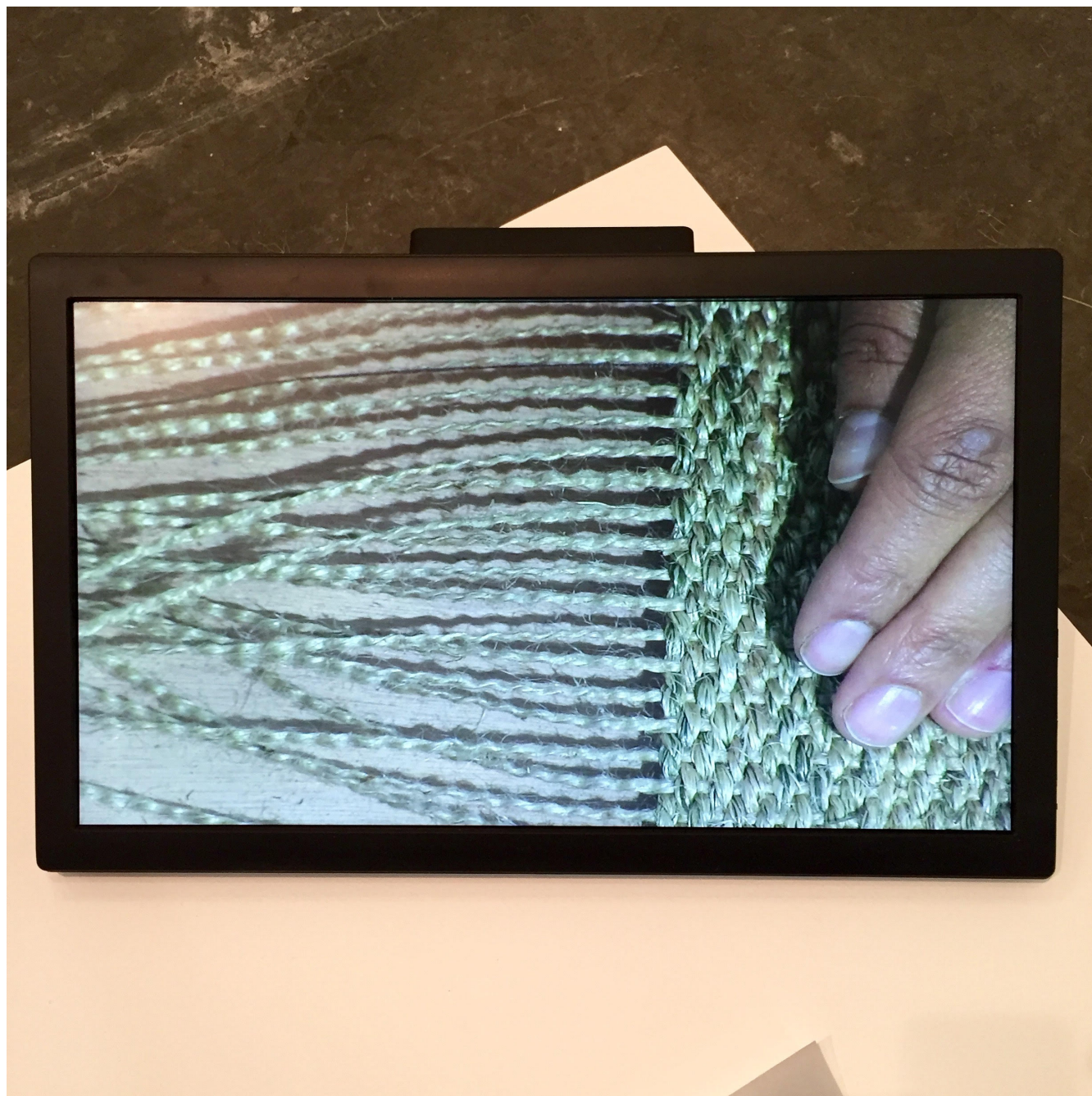
Decortication table, 2016
mixed media installation
Unique



Decortication table, 2016
mixed media installation
Unique



Decortication table, 2016
mixed media installation
Unique



Turns of phrase: Fig..11 (Upendo), 2015

Fabric, wood, 4 x 16 x 58 cm

Unique

Courtesy Kapwani Kiwanga et Galerie Jérôme Poggi, Paris



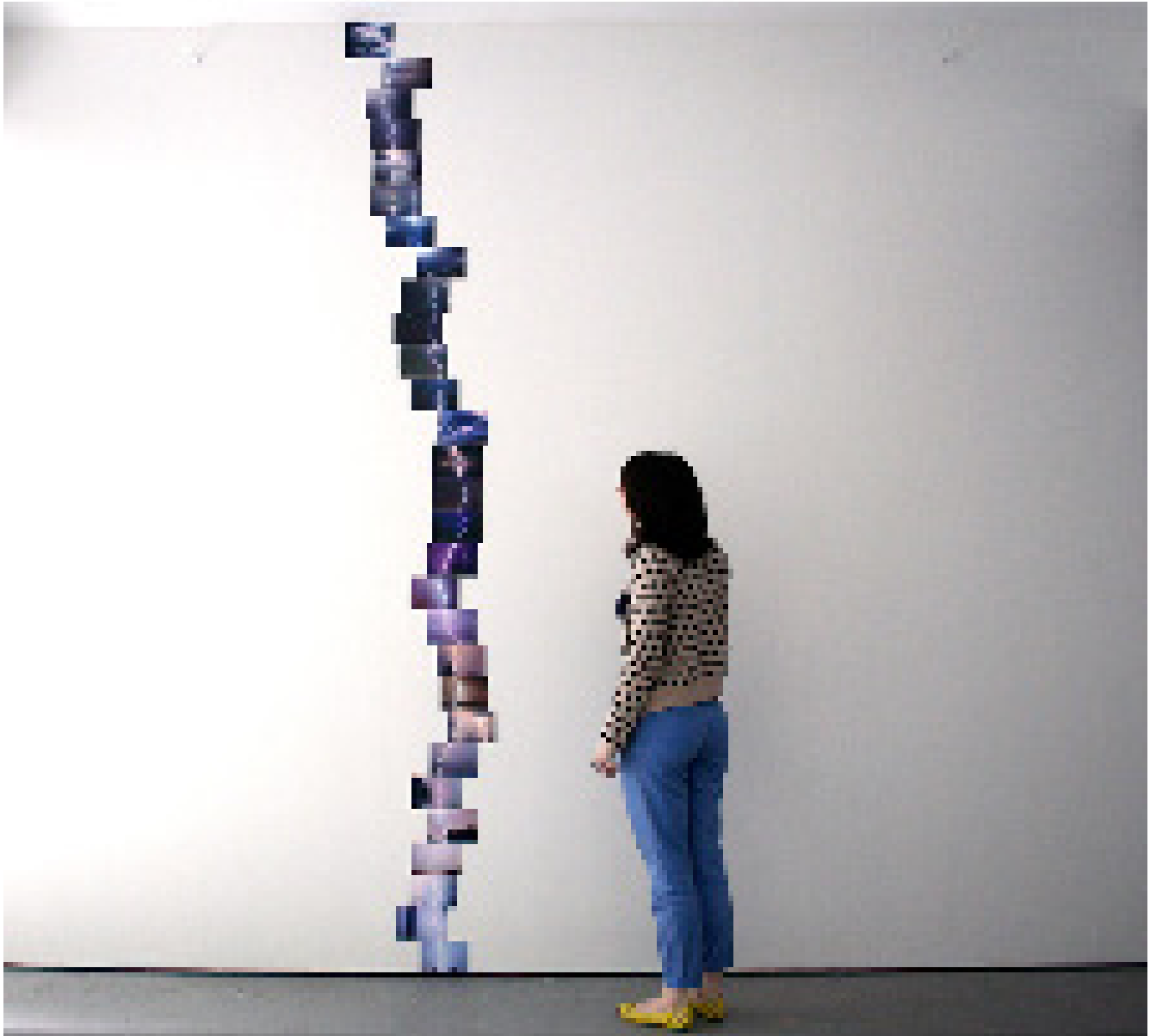
Ground, 2012

30 colored photographs : 10 x 15 cm

Variables dimensions

Edition 1/8 + 2 AP

Courtesy Kapwani Kiwanga and Galerie Jérôme Poggi, Paris



Ground, 2012

30 colored photographs : 10 x 15 cm

Variables dimensions

Edition 1/8 + 2 AP

CourtesyKapwani Kiwanga and Galerie Jérôme Poggi, Paris



THE ARMORY SHOW | *Kapwani Kiwanga*

Maji Maji, 2014

Mixed media installation

Variables dimensions

Edition of 3

CourtesyKapwani Kiwanga and Galerie Jérôme Poggi, Paris



Hydrospheres, 2015

Vinyls record, salt

Edition of 5

Courtesy Kapwani Kiwanga and Galerie Jérôme Poggi, Paris



Ifa Organ, 2013

Perforated organ barrel card

13 x 450 cm

Edition 1/8 + 2 AP

Courtesy Kapwani Kiwanga and Galerie Jérôme Poggi, Paris



Vumbi, 2015

Color print on paper 300 grams, framed wood

Print : 24 x 36 cm

Frame : 65 x 55 cm

Edition 1/8 + 2 AP

Courtesy Kapwani Kiwanga and Galerie Jérôme Poggi, Paris



Subduction study # 1, 2015

Folding, pigmentary printing

83 x 63 cm

Edition of 5 + 1 EA

Courtesy Kapwani Kiwanga and Galerie Jérôme Poggi, Paris



Subduction study # 2, 2015

Folding, pigmentary printing

90 x 73 cm

Edition of 5 + 1 EA

Courtesy Kapwani Kiwanga and Galerie Jérôme Poggi, Paris



Koki Doré, 2014

Blue sequins, cord, salt, shell

Variable dimensions

Unique

Courtesy Kapwani Kiwanga and Galerie Jérôme Poggi, Paris



Exhibition view "*Continental Shift*" at Galerie Jérôme Poggi, Paris 2015
© Nicolas Brasseur



Petrograph, 2015

Ink on fabric

350 x 220 cm

Unique

Courtesy Kapwani Kiwanga and Galerie Jérôme Poggi, Paris



THE ARMORY SHOW | *Kapwani Kiwanga*

Erygmascope, 2015

Glass, neon, natural oak, laser print on rhodoïd

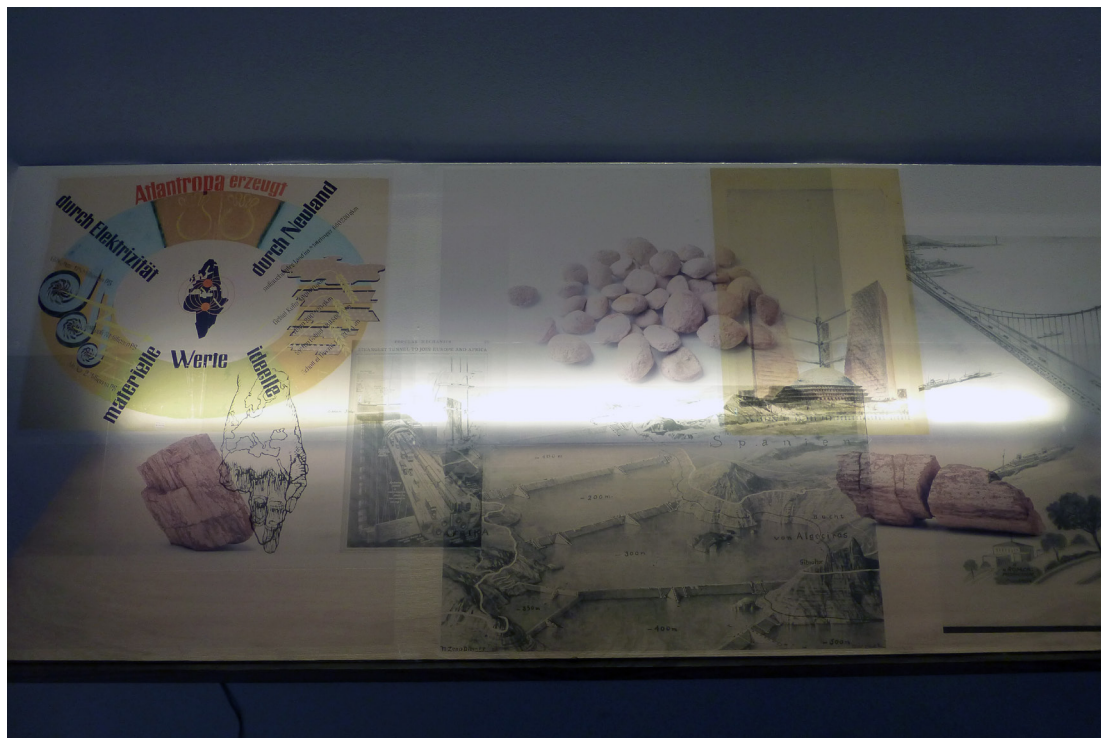
375 x 34 cm

Unique

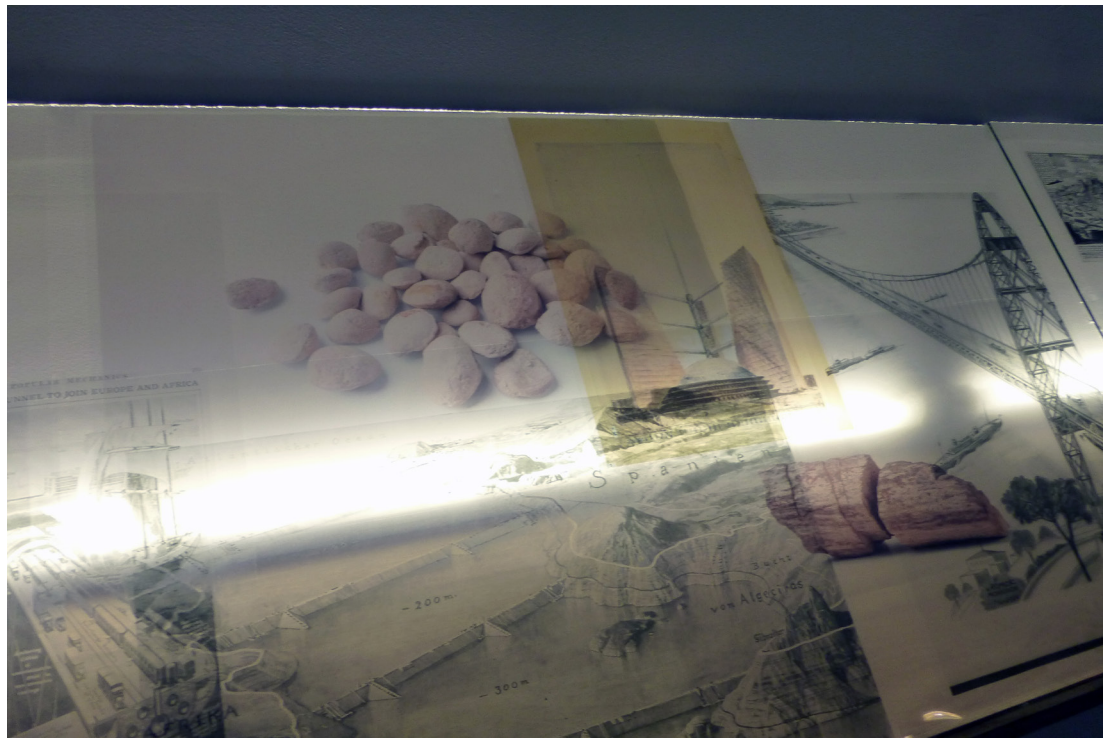
Courtesy Kapwani Kiwanga and Galerie Jérôme Poggi, Paris



Erygmascope, details, 2015



Erygmascope, details, 2015



KAPWANI KIWANGA | *Biography*

Born in 1978 in Canada, Kapwani Kiwanga lives and works in Paris. She majored in comparative studies of Anthropology and Religions in McGill university, before entering the Ecole Nationale Supérieure des Beaux-Arts de Paris, taking part in a program called « La Seine ». Kapwani Kiwanga carried on in the Fresnoy, Studio National d'Art Contemporain between 2007 and 2009, and as a resident in the MU Foundation, Eindhoven. She won several prizes in international festivals for her films and video projects, and was nominated twice for the BAFTA.

Several institutions have devoted solo shows to Kapwani Kiwanga recently : the South London Gallery (UK), Galeries Nationales du Jeu de Paume in Paris (FR), Viafarini in Milan (IT), Le Granit in Belfort (FR) and la Ferme du Buisson (FR), FIAC Paris (FR). Her works have been exhibited in Centre Georges Pompidou (FR), the Glasgow Center of Contemporary Art (UK), the Museum of Modern art Dublin (IR), the Bienal Internacional de Arte Contemporáneo de Almería (ES), Salt Beyoglu in Istanbul (TK), the Kassel Documentary Film Festival (DE), the Kaleidoscope Arena Rome (IT) and at Paris Photo (FR). Twice nominated for BAFTA, her movies have been rewarded in several international festivals. In 2016, Kiwanga is commissioned artist for the Armory Show.

RECENT AND UPCOMING SHOWS :

Solo show - La Ferme du Buisson (FR)

24 Apr - 24 Jul. 2016

Solo show - Le Granit, Belfort (FR)

05 Mar - 19 Apr. 2016

***Still (the) Barbarians* - Ireland's Biennial of Contemporary Art EVA International (IR)**

16 Apr - 17 Jul. 2016

***Parlons-en* - Le Musée départemental d'art contemporain de Rochechouart (FR)**

27 Feb - 12 Jun. 2016

***Hors sol* - FRAC Poitou-Charentes, Angoulême (FR)**

12 Feb - 14 May. 2016

***Lucy Iris* - Musac, León (ES)**

30 Jan - 12 Jun. 2016

***Between One Time and Another*, Temporary Gallery, Köln (DE)**

14 Apr. - 19 Jun. 2016

***African textile today*, Galerie William Morris, London (UK)**

20 Feb. - 29 May. 2016

KAPWANI KIWANGA | CV

SOLO SHOWS

2016

La Ferme de Buisson, Noisiel (FR) Commissaire: Julie Pellegrin
Le Granit, Belfort (FR) Commissaire: Pierre Soignon

2015

Continental Shift, Galerie Jérôme Poggi, Paris (FR)
FIAC, Grand Palais- Secteur Lafayette, Paris (FR)
1:54 Contemporary African Art Fair, London (UK)
Mediated measures Viafarini, Milan (IT)
Kinjiketile Suite, South London Gallery, Londres (UK)
Trace Évidence, Ecole Supérieure d'Art et Design, Bourse du Travail, Valence (FR)

2014

Maji, Maji, Jeu de Paume, Paris (FR)
Fallible Witnesses, Galerie Karima Celestin, Marseille (FR)

GROUP SHOWS

2015

Atopolis, Manège de Sury, Mons (BE)
What we call love, IMMA, Dublin (UK)
Control mode feedback, Hall 14, Leipzig (DE)
La vérité des apparences, La Tôlerie, Clermont-Ferrand (FR)
La vérité des apparences, Galerie De Roussan, Paris (FR)
Mythopoeia, Tiwani Contemporary, Londres (UK)
Does Not Equal, W139, Amsterdam (NL)
A century of centuries, SALT BEYOGLU, Istanbul (TUR)

2014

HiSTÉRICAL MATERIALISM, Galerie Jérôme Poggi, Paris (FR)
Parle pour toi, Marian Goodman, Paris (FR)
Outside, The Swedish Contemporary Art Foundation, Stockholm (SE)
Giving Contours to Shadows, Savvy Contemporary / Neuer Berliner Kunstverein, Berlin (DE)
Oracular Vernacular, MAMO, Marseille (FR)

2013

Le Tamis et le sable, Maison populaire de Montreuil (FR)
Cyclicités, Galerie Le Manège, Dakar (SN)
ChinAfrique, Galerie du Buisson, Paris (FR)
Backstory: Creative Ruminations, Paris College of Art, Paris (FR)

2012

Synchronicity II, Tiwani Contemporary, Londres (UK)
Houille Blanche, Terre Froide, en collaboration avec l'Organe de Concrétisation de Recherches, Treignac Project, Treignac (FR)

2011

Synchronicity, Photoquai et Galerie Baudoin Lebon, Paris (FR)
Kaleidoscope Arena, 4e Road to Contemporary Art, Rome (IT)
Carte Blanche AfricAmerica, Anis Gras, Arcueil (FR)
100 tekeningen tegen de Vietnam oorlog, Komplot, Bruxelles (BE)
100 dessins contre la guerre du Vietnam, Le commissariat, Paris (FR)

2010

Filmer la Musique, Point Ephémère, Paris (FR)

2009

169A2, sur une invitation d'Eric Stephany et Xavier Mazzarol, Paris (FR)
Panorama 11, Le Fresnoy : Studio National des Arts Contemporains, Tourcoing (FR)

2008

Alt-W: New Directions in Scottish Digital Culture, Glasgow Centre of Contemporary Art, Glasgow (UK)
Panorama 9-10, Le Fresnoy: Studio National des Arts Contemporains, Tourcoing (FR)

2007

Double Take, Korean National University of the Arts, Séoul (KR)

2006

In the Centre Pompidou, Centre Pompidou, Paris (FR)
DepART, Starhill Gallery, Kuala Lumpur (MY)
Kuala Lumpur Tour et Retour, Ecole Nationale Supérieure des Beaux-Arts, Paris (FR)
Bienal Internacional de Arte Contemporáneo, Almería (ES)

2006

Bienal Internacional de Arte Contemporáneo, Almería, (ES)
Ricochet, Stills Gallery, Edimbourg (UK)



The Jérôme Poggi Gallery essentially carries out a task of prospection orientated towards young contemporary creation but also toward those figures already recognized, even historical, for whom it supports the process of recognition as much in economical as in critical and historical spheres.

The Gallery was founded by Jérôme Poggi in 2009, and is originally based near Gare du Nord in Paris. The Gallery has opened a new space in Le Marais Paris, next to the Centre Pompidou.

Jérôme Poggi is also director of «Objet de Production», a production and studies facility created in 2004, to make art appear within the society through private and public commissions as part of the New Patrons initiated by La Fondation de France.

| ARTISTES REPRÉSENTÉS - REPRESENTED ARTISTS:

| Babi Badalov
| Fayçal Baghriche
| Anna-Eva Bergman
| Maxime Bondu
| Juliana Borinski
| Gregory Buchert
| Julien Crépieux
| Cédrick Eymenier
| Larissa Fassler
| Kapwani Kiwanga
| Bertrand Lamarche
| Wesley Meuris
| Sophie Ristelhueber
| Vittorio Santoro
| Société Réaliste
| Georges Tony Stol

2 rue Beaubourg, F-75004 Paris
+33 (0)9 84 38 87 74 – galeriepoggi.com

Mar. – Sam. 11.00 – 19.00
Tue. – Sat. 11.00 – 07.00