



Kapwani Kiwanga, *Desire Paths - Alytt Raiyard*, 2018 ©John Dean

The Border is a State of Mind

An exhibition by Sasha Pevak

Babi BADALOV
Eric BAUDELAIRE
Bady DALLOUL

Nikita KADAN
Kapwani KIWANGA
Sophie RISTELHUEBER
SOCIÉTÉ RÉALISTE

For its Fall exhibition, Jérôme Poggi has invited the curator Sasha PEVAK to conceive a two-part project, which will be jointly presented at the gallery and at the Grand Palais for the 45th edition of FIAC.

Entitled 'The Border is a State of Mind', the exhibition gathers the work of seven artists : Babi Badalov, Eric Baudelaire, Bady Dalloul, Nikita Kadan, Kapwani Kiwanga, Sophie Ristelhueber and Société Réaliste.

This collective project revolves around the notion of a territorial border and the symbolic implications it contains. In the exhibition's founding statement, Sasha Pevak puts into perspective the unachieved utopia of the XXth century, a possible 'world without borders', and the state of our present world, in which erecting walls seem to be 'promises of a safer and more prosperous future' from the standpoint of certain politicians and media.

'Instruments of colonization, borders represent a symbol of violence endured by the colonized nations throughout History, bearing witness to past and present conflicts', states the curator

Curating : Born in Moscow in 1988, Sasha PEVAK is a researcher, curator and art critic. His focus as a PhD student at Paris 8 University has mainly been on the connections between art and power, as well as on the operation of the art system under authoritarian regimes. His curatorial practice is based on the creation of sustainable exchanges and dialogues with artists.

Part I

Galerie Jérôme Poggi, 2 rue Beaubourg, Paris 4

*From 13th October to 16th November 2018
Opening on Saturday, 13th from 3pm to 8pm*

Part II

45th edition of the FIAC - Grand Palais, Paris 16

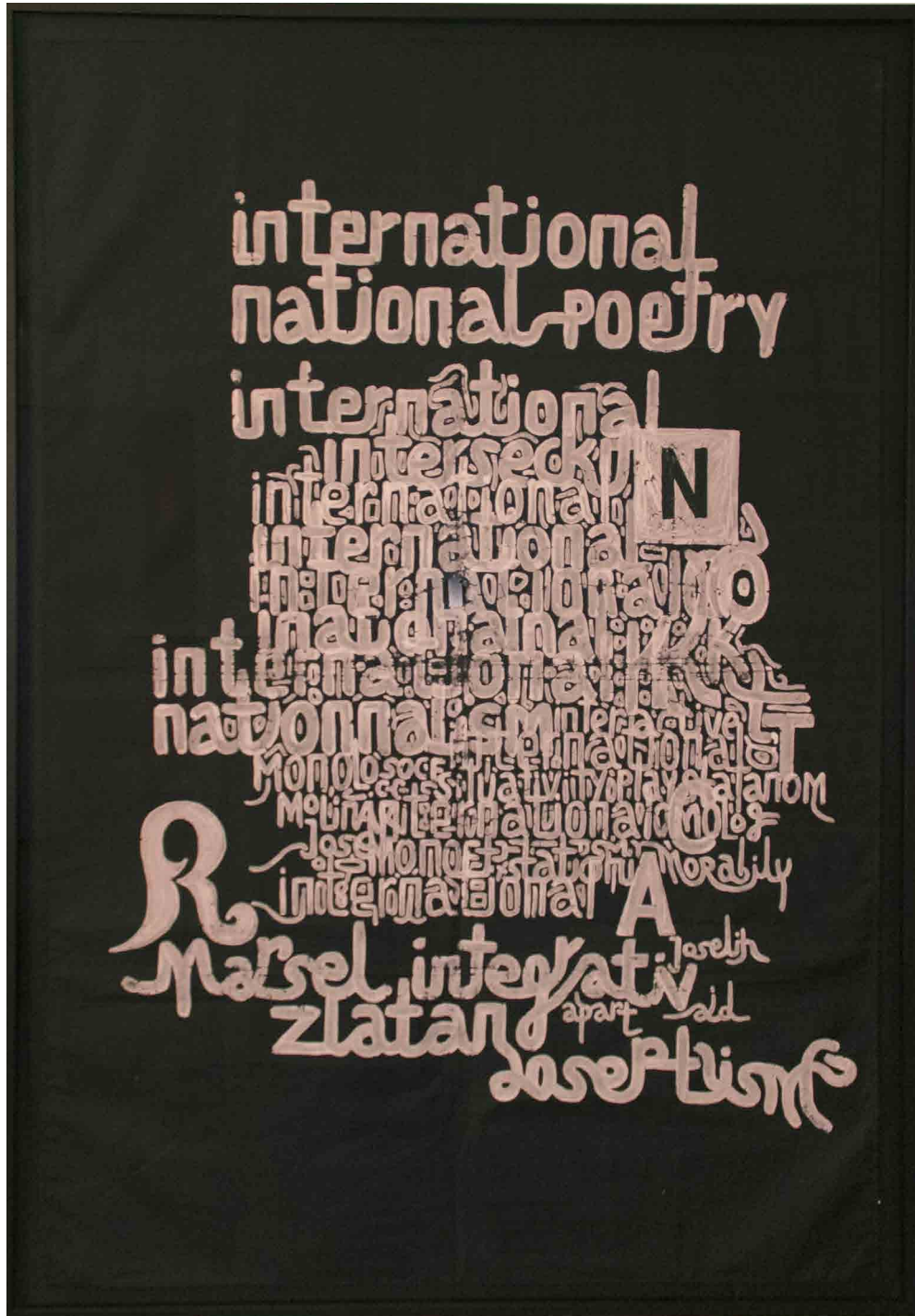
Upper Galleries Booth 1.H11
From 18th au 21st octobre 2018



«*A world without borders*» – isn't it the last unrealized utopia of the 20th century? Since the 1980s, the Western consciousness sought to abandon national frontiers. Yet, are borders really a remnant of the past when, today, thousands of people stay stranded at the doorstep of Europe, the President of the United States strives to toughen the immigration laws, while a struggle for zones of influence provoke new hybrid wars and the revision of long-established borders? a With the recent rise of nationalist movements, certain politicians and media constantly put forth statements about erecting new walls as promises of a safer and more prosperous future. While the flow of capital knows no territorial limitations, frontiers continue to selectively filter human flow and are given new symbolic meanings. They become “a scrim on which can be projected an anthropomorphized other as the cause of national woes ranging from dilutions of ethnicized national identity to drug use, crime, and declining real wages” (Wendy Brown, *Walled States*, 2010). Instruments of colonization, borders represent a symbol of violence endured by the colonized nations throughout History; such geometrical cuts and stitches on the body of the planet, they bear witness to past and current conflicts. The reappropriation of borders by those who have been for so long alienated from their lands, might thus reflect their aspiration to decide at last their destiny for themselves. An element of power and of sovereignty, the frontier remains one of the tangible expressions of the psychological desire of a State.

Sasha PEVAK

Babi Badalov
International, 2016
Painting on fabric
160 x 115 cm
Courtesy Galerie Poggi, Paris



Babi Badalov

No One Illegal, 2013-2018

Id photo and collage framed

56,5 x 46,5 cm

Courtesy Galerie Poggi, Paris



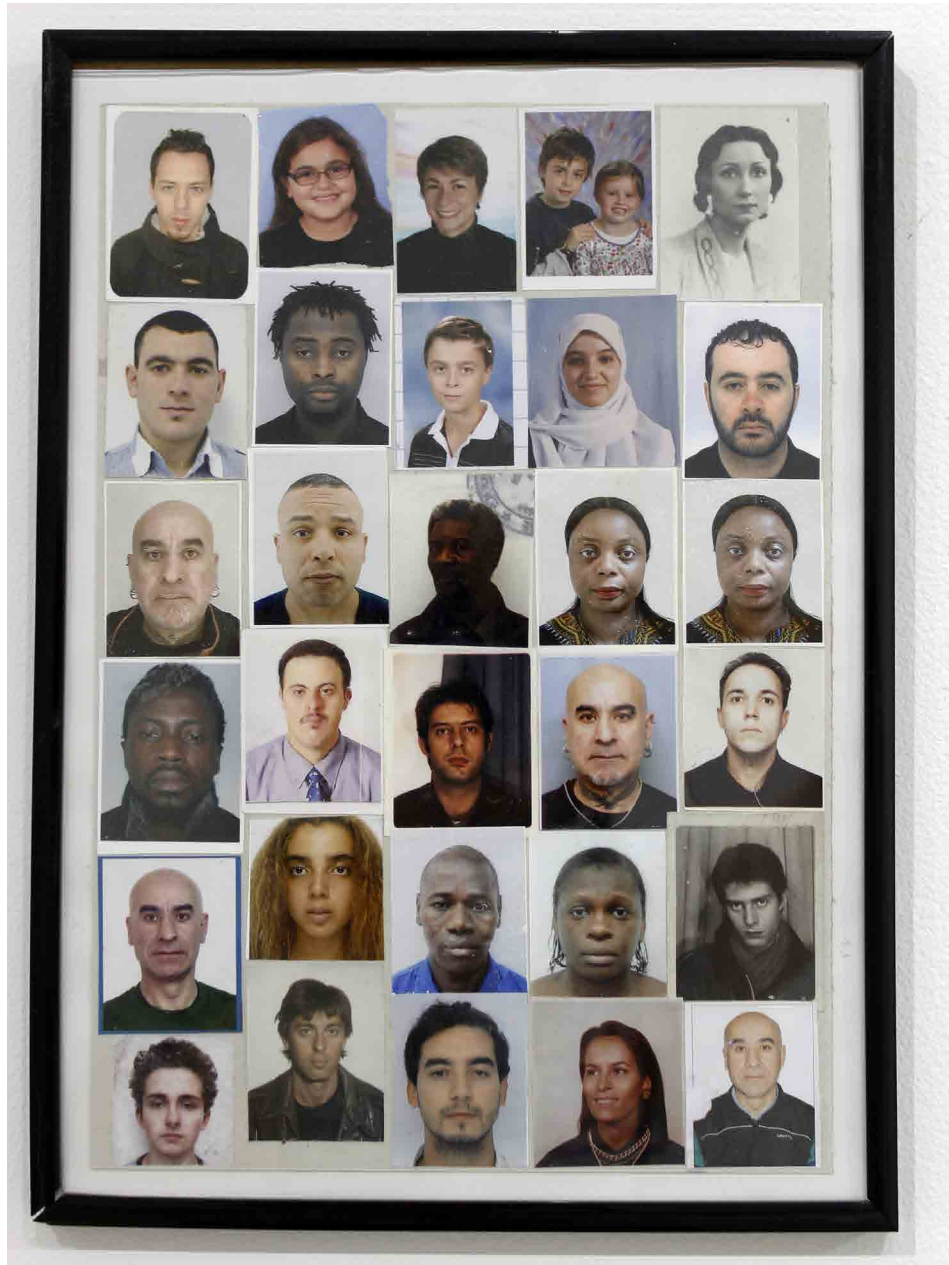
Babi Badalov

No One Illegal, 2013-2018

Id photo and collage framed

30,7 x 22 cm

Courtesy Galerie Poggi, Paris



Eric Baudelaire

Site displacement / Déplacement de site- 1a -1b, 2007

C-Print framed dyptich

35 x 27,6 cm each

Ed. 4/6 - 6 ex. + 2 AP

Courtesy of the artist and Galeria Juana de Aizpuru, Madrid



Eric Baudelaire

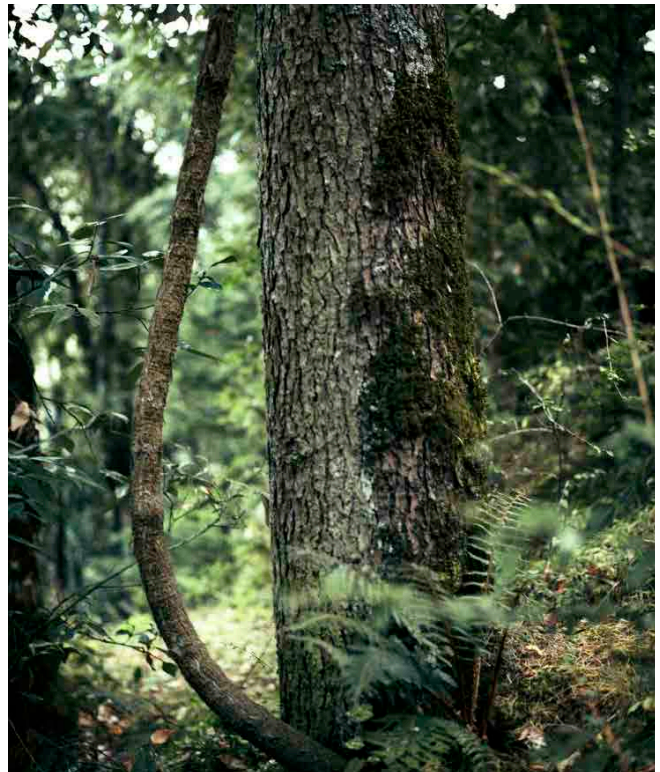
Site displacement / Déplacement de site- 2a-2b, 2007

C-Print framed dyptich

40 x 31 cm each

Ed. 4/6 - 6 ex. + 2 AP

Courtesy of the artist and Galeria Juana de Aizpuru, Madrid



Eric Baudelaire

Site displacement/ Déplacement de site- 3a -3b, 2007

C-Print framed dyptich

35 x 44 cm each

Ed. 4/6 - 6 ex. + 2 AP

Courtesy of the artist and Galeria Juana de Aizpuru, Madrid



Eric Baudelaire

Site displacement / Déplacement de site- 4a -4b, 2007

C-Print framed dyptich

35 x 27 cm each

Ed. 4/6 - 6 ex. + 2 AP

Courtesy of the artist and Galeria Juana de Aizpuru, Madrid



Eric Baudelaire

Site displacement/ Déplacement de site- 5a -5b, 2007

C-Print framed dyptich

85 x 67 cm each

Ed. 4/6 - 6 ex. + 2 AP

Courtesy of the artist and Galeria Juana de Aizpuru, Madrid



Eric Baudelaire

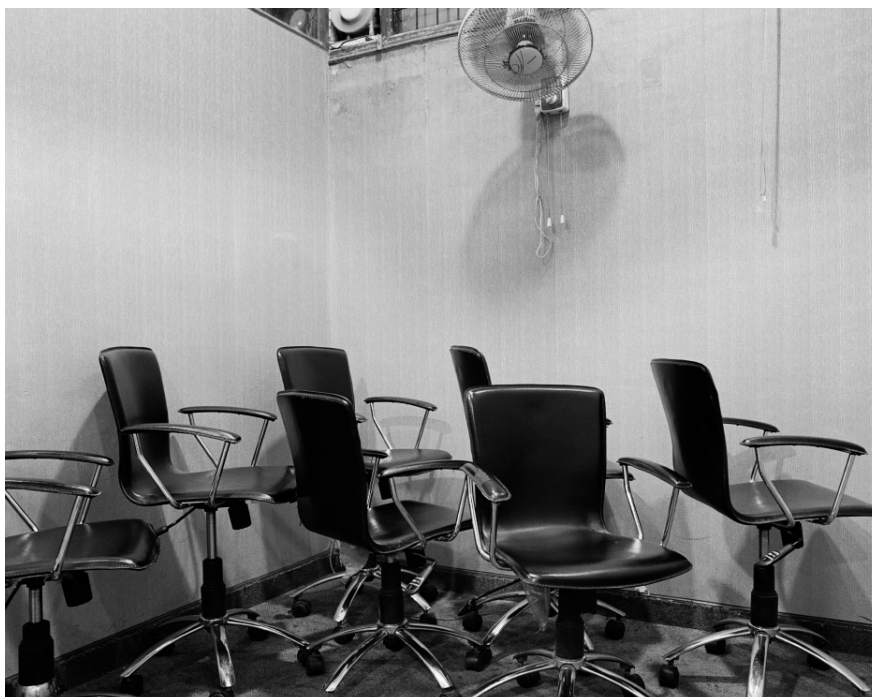
Site displacement / Déplacement de site- 6a -6b, 2007

C-Print framed dyptich

35 x 44 cm each

Ed. 4/6 - 6 ex. + 2 AP

Courtesy of the artist and Galeria Juana de Aizpuru, Madrid



Eric Baudelaire

Site displacement / Déplacement de site- 9a -9b, 2007

C-Print framed dyptich

20 x 25 cm each

Ed. 4/6 - 6 ex. + 2 AP

Courtesy of the artist and Galeria Juana de Aizpuru, Madrid



Eric Baudelaire

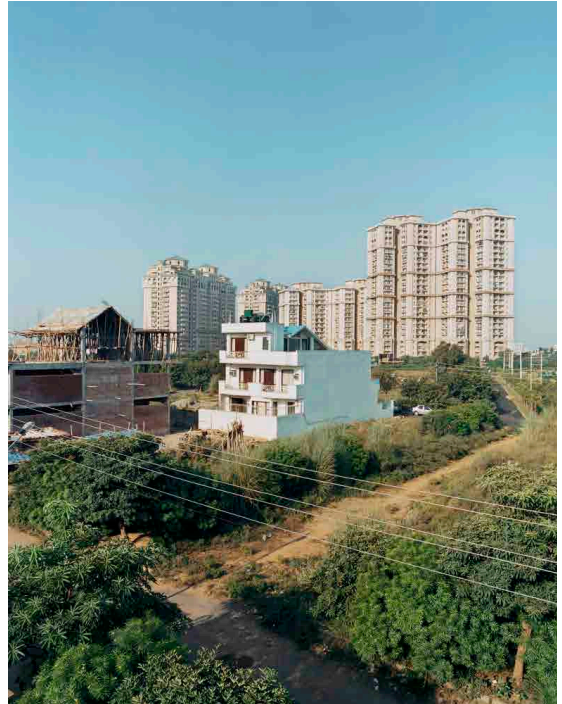
Site displacement / Déplacement de site- 12a -12b, 2007

C-Print framed dyptich

70 x 55 cm each

Ed. 4/6 - 6 ex. + 2 AP

Courtesy of the artist and Galeria Juana de Aizpuru, Madrid



Eric Baudelaire

Site displacement / Déplacement de site- 13a -13b, 2007

C-Print framed dyptich

50 x 63,5 cm each

Ed. 4/6 - 6 ex. + 2 AP

Courtesy of the artist and Galeria Juana de Aizpuru, Madrid



Eric Baudelaire

Site déplacement / Déplacement de site- 14a -14b, 2007

C-Print framed dyptich

35 x 44,6 cm each

Ed. 4/6 - 6 ex. + 2 AP

Courtesy of the artist and Galeria Juana de Aizpuru, Madrid



Eric Baudelaire

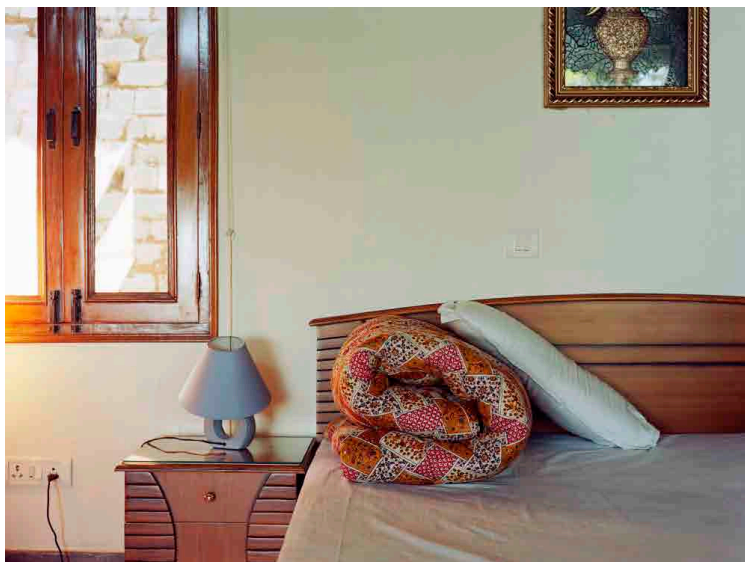
Site displacement / Déplacement de site- 15a -15b, 2007

C-Print framed dyptich

15 x 19 cm each

Ed. 4/6 - 6 ex. + 2 AP

Courtesy of the artist and Galeria Juana de Aizpuru, Madrid



Eric Baudelaire

Site déplacement / Déplacement de site- 16a -16b, 2007

C-Print framed dyptich

25 x 31 cm each

Ed. 4/6 - 6 ex. + 2 AP

Courtesy of the artist and Galeria Juana de Aizpuru, Madrid



Eric Baudelaire

Site displacement/ Déplacement de site- 17a -17b, 2007

C-Print framed dyptich

20 x 15,7 cm each

Ed. 4/6 - 6 ex. + 2 AP

Courtesy of the artist and Galeria Juana de Aizpuru, Madrid



Eric Baudelaire

Site displacement / Déplacement de site- 19a -19b, 2007

C-Print framed dyptich

20 x 25 cm each

Ed. 4/6 - 6 ex. + 2 AP

Courtesy of the artist and Galeria Juana de Aizpuru, Madrid



Eric Baudelaire

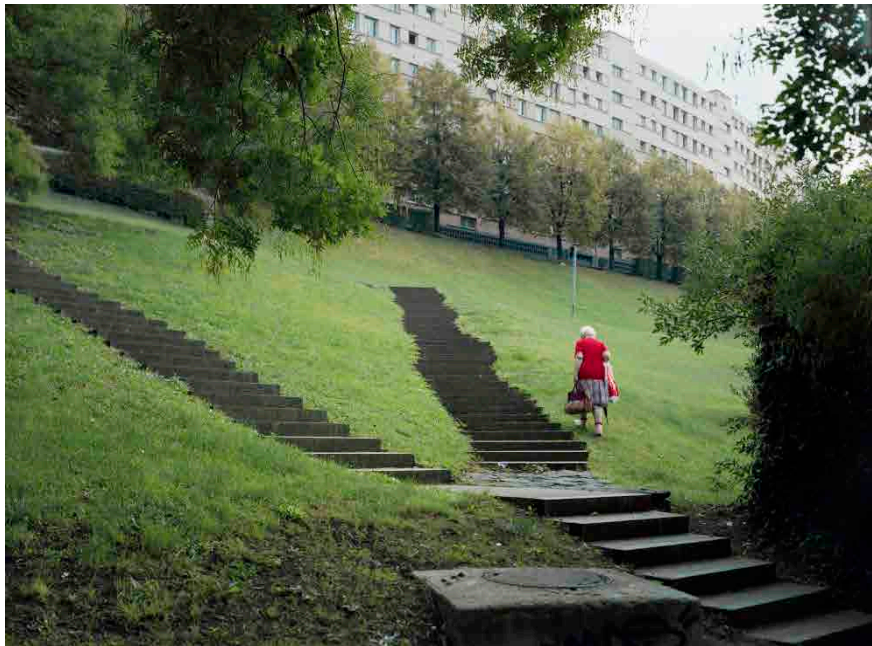
Site displacement / Déplacement de site- 21a -21b, 2007

C-Print framed dyptich

30 x 38 cm each

Ed. 4/6 - 6 ex. + 2 AP

Courtesy of the artist and Galeria Juana de Aizpuru, Madrid



Bady Dalloul

Scénario pour une Indépendance, 2018

Collage, photographs and ink on cork board

135 x 165 cm

Courtesy of the artist

© Stoyan Vassev



Bady Dalloul

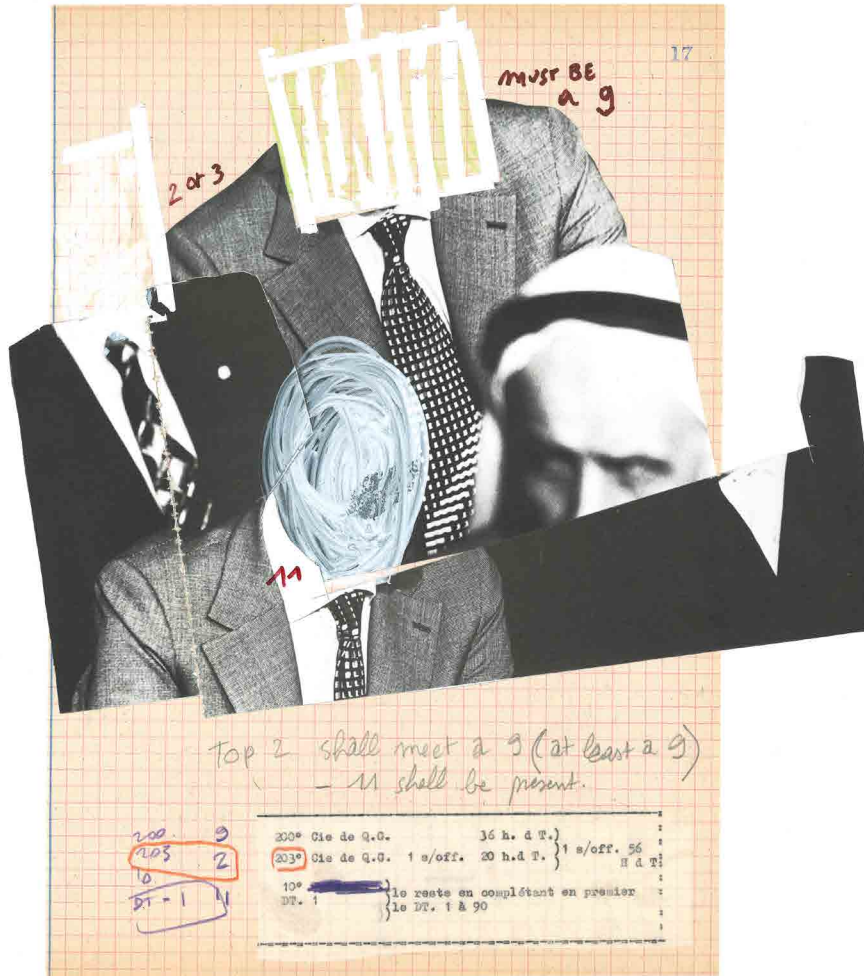
Scénario pour une Indépendance, 2018, Detail

Collage, photographs and ink on cork board

135 x 165 cm

Courtesy of the artist

© Stoyan Vassev



Bady Dalloul

Scénario pour un Bantoustan, 2018

Collage, photographs and ink on cork board

179,5 x 163 cm

Courtesy Galerie Poggi, Paris and the artist



Bady Dalloul

Scénario pour une Réddition, 2018

Collage, photographs and ink on cork board

90 x 140 cm

Courtesy Galerie Poggi, Paris and the artist



Nikita Kadan

National Landscape (House of Services), 2018

Charcoal and photograph on paper, framed

150 x 200 cm

Courtesy Galerie Poggi, Paris



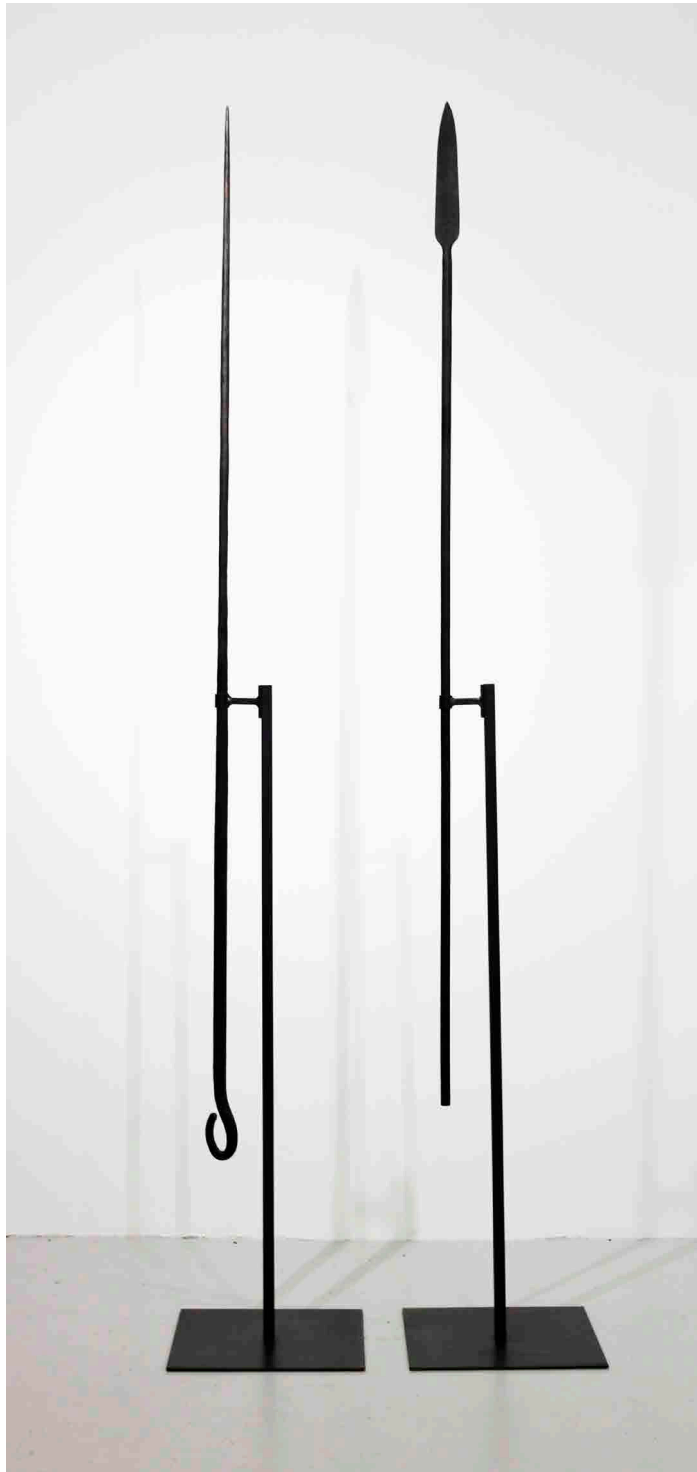
Nikita Kadan

Reconstituted Weapons: A Tiger's Leap, 2018

Forged iron

230 x 50 cm each

Courtesy Galerie Poggi, Paris



Kapwani Kiwanga

Desire Paths, Alyht Railyard, 2018

Printed cotton fabric and galvanized reinforcing steel

252 x 151,5 cm

Courtesy Galerie Poggi, Paris

© John Dean, Esker Foundation, Calgary (CA)



Kapwani Kiwanga

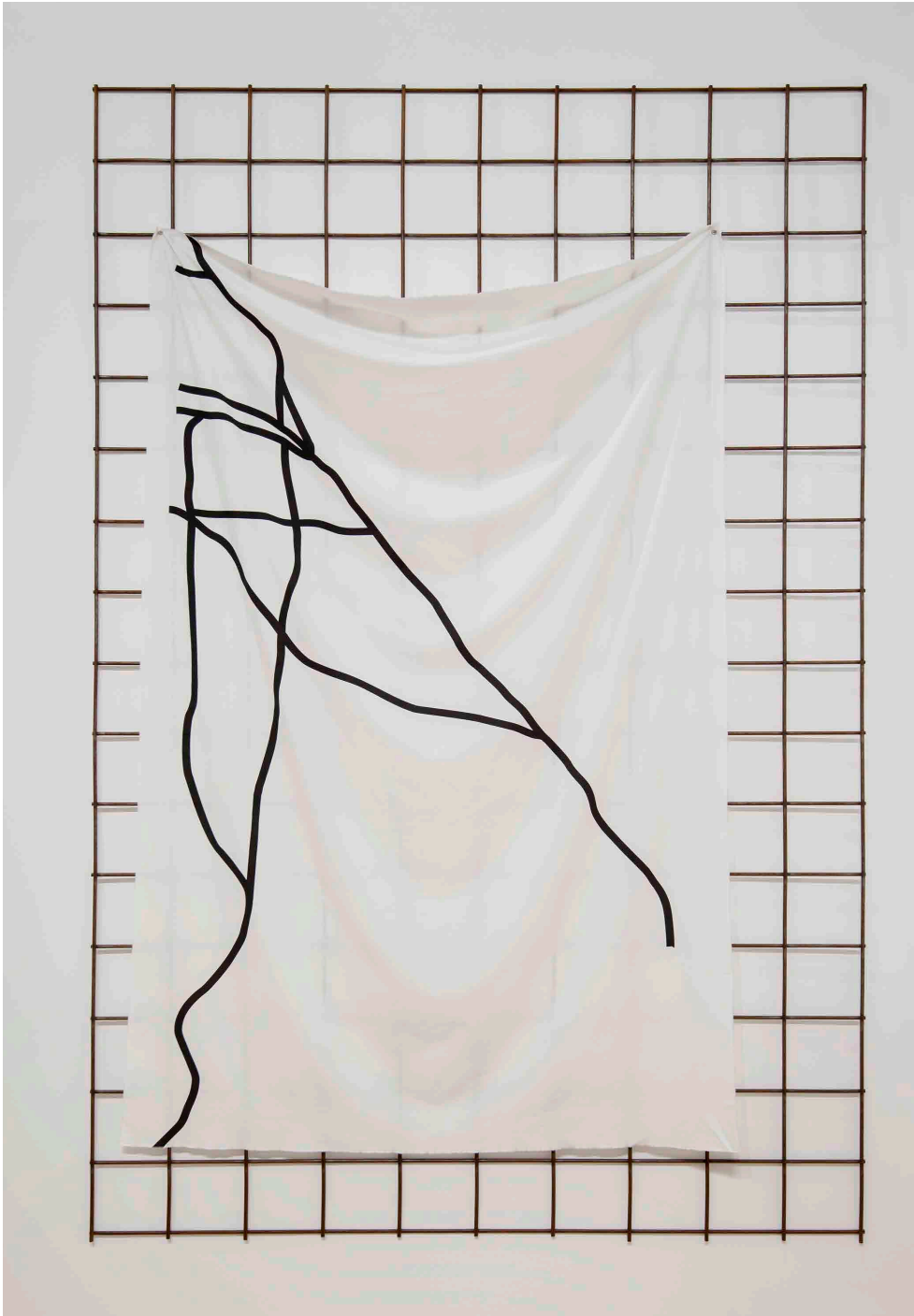
Desire Paths, Rosscarrock 2018

Printed cotton fabric and galvanized reinforcing steel

252 x 151,5 cm

Courtesy Galerie Poggi, Paris

© John Dean, Esker Foundation, Calgary (CA)



—————
Sophie Ristelhueber

Fait #17, 1992

Black and white photography, silver print mounted on aluminium, with golden polished frame

100 x 127 x 5 cm

Ed. 3 ex.

Courtesy Galerie Poggi, Paris



————— **Sophie Ristelhueber**

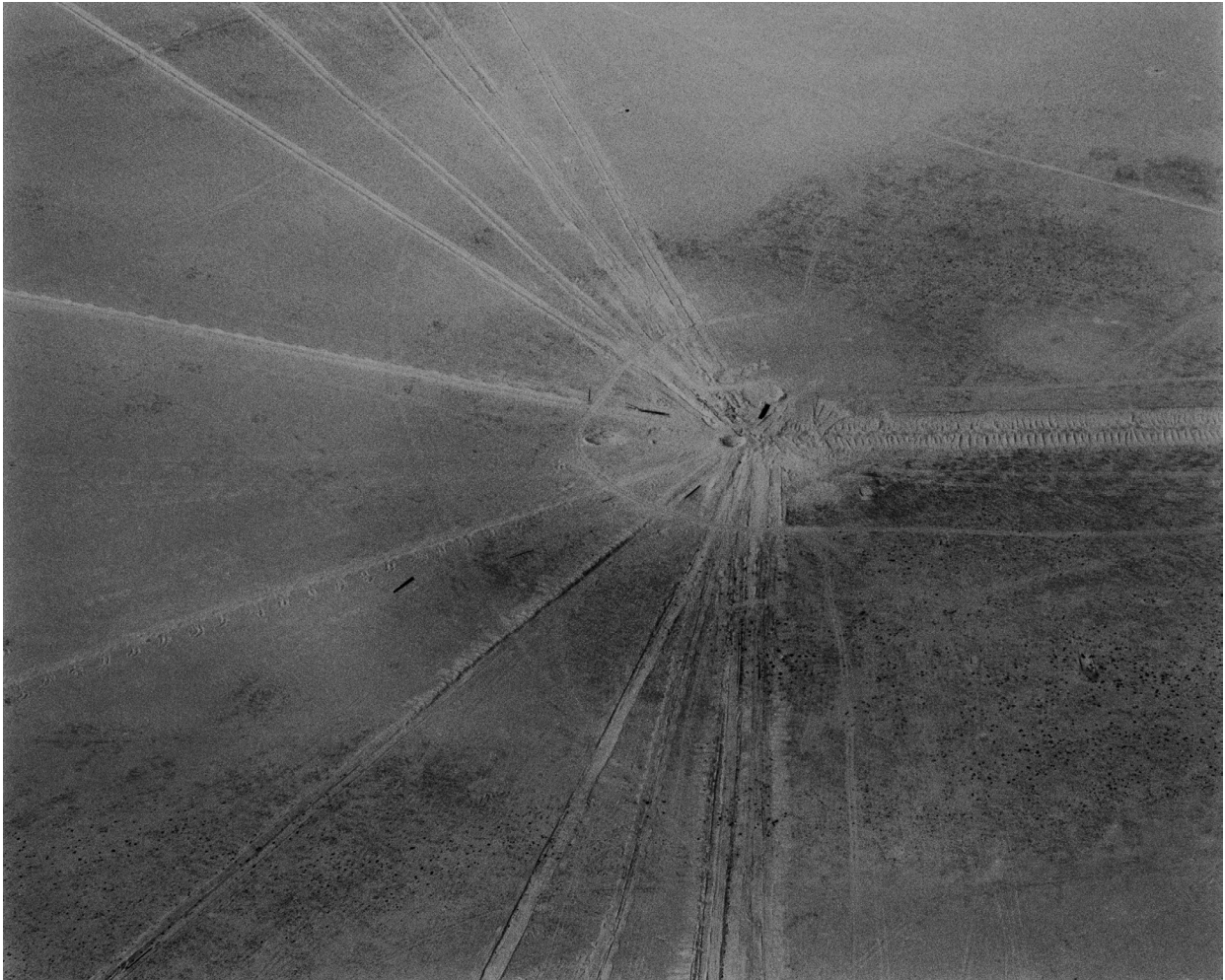
Fait #52, 1992

Black and white photography, silver print mounted on aluminium, with golden polished frame

100 x 127 x 5 cm

Ed. 3 ex.

Courtesy Galerie Poggi, Paris



Sophie Ristelhueber

Pont Allenby #1, 2004, 2016

Pigment print on matte Fine Art paper

90 x 130 cm

Ed. 3 ex. + 1 AP

Courtesy Galerie Poggi, Paris



Sophie Ristelhueber

Pont Allenby #2, 2016

Pigment print on matte Fine Art paper

130 x 90 cm

Ed. 3 ex. + 1 AP

Courtesy Galerie Poggi, Paris



Sophie Ristelhueber

WB #22, 2005

Color silver print mounted on aluminium, framed

120 x 150 cm

Ed. 3 ex. + 1 AP

Courtesy Galerie Poggi, Paris



Société Réaliste

A Gift from Birobidzhan, 2011

Steel sculpture

60 cm diameter

Ed. 3ex. + 2 AP

Courtesy Galerie Poggi, Paris



Société Réaliste

Barbarus, 2011

Enamel plate

20 x 40 cm

Ed. 3 ex. + 2 AP

Courtesy Galerie Poggi, Paris



Société Réaliste

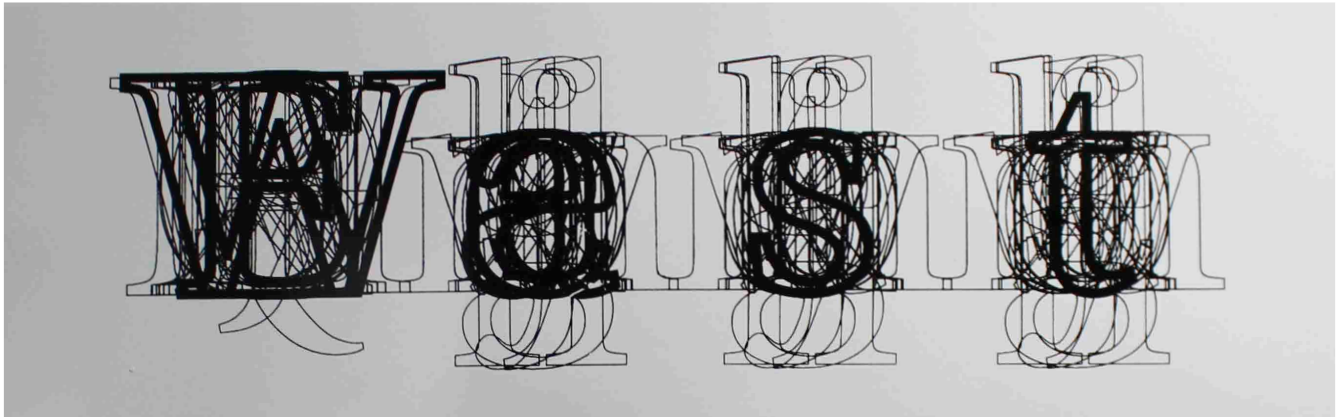
East/West, 2014

Enamel plate

80 x 24 cm

Ed. 3 ex. + 2 AP

Courtesy Galerie Poggi, Paris



Société Réaliste

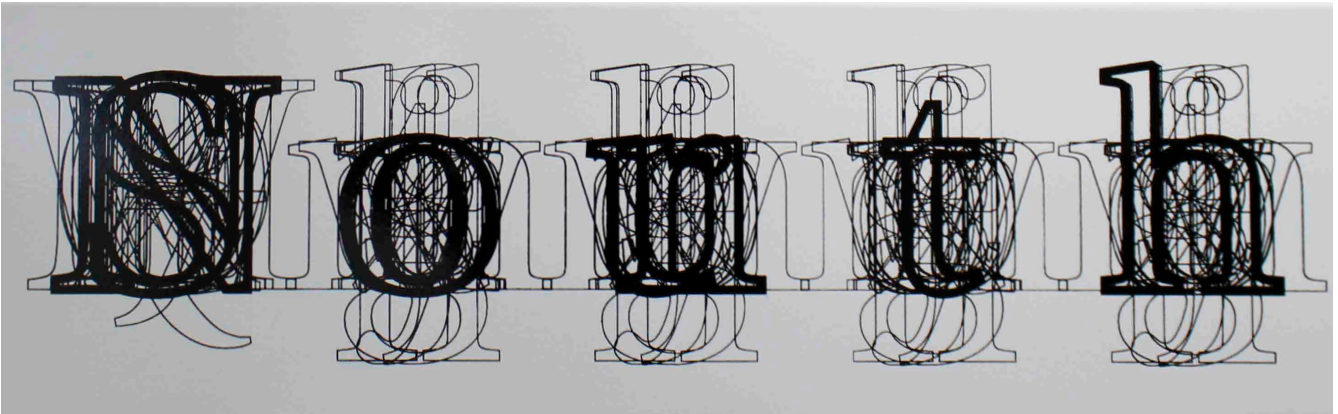
North/South

Enamel plate

80 x 24 cm

Ed. 3 ex. + 2 AP

Courtesy Galerie Poggi, Paris



Société Réaliste

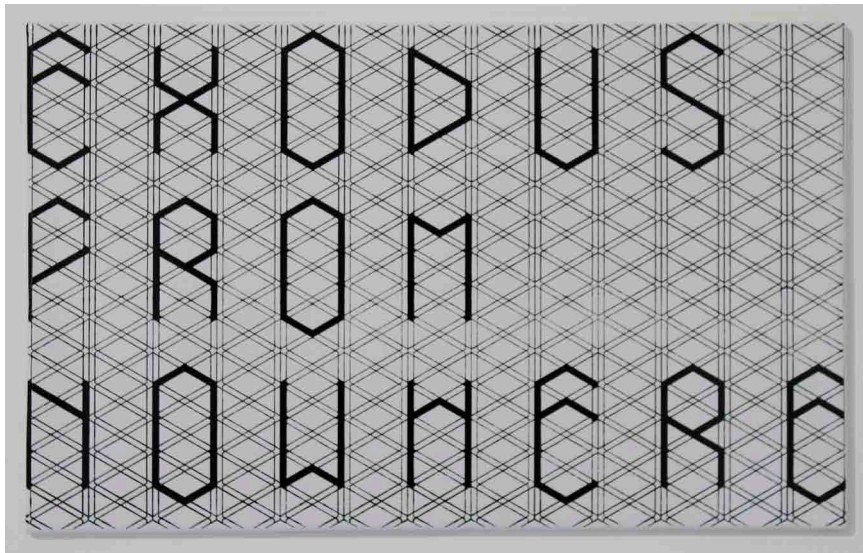
Exodus from nowhere, 2009 - 2011

Enamel plate

50 x 30 cm

Ed. 3 ex. + 2 AP

Courtesy Galerie Poggi, Paris



Société Réaliste

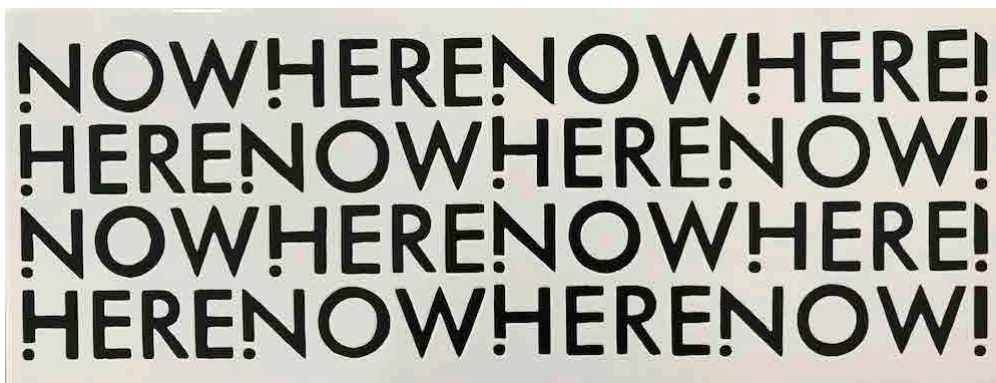
Now!here!, 2011

Enamel plate

50 x 20 cm

Ed. 3 ex. + 2 AP

Courtesy Galerie Poggi, Paris



Galerie Jérôme Poggi

2 rue Beaubourg – 75 004 Paris – France
+33 (0)9 84 38 87 74 – galeriepoggi.com

Mar. – Sam. 11.00 – 19.00
Tue. – Sat. 11 am – 07 pm

EXHIBITIONS

| *The border is a state of mind* - group show
Oct. 13rd - Nov. 17th 2018
Galerie Jérôme Poggi, Paris

| Group show
Feb. 2nd - March 9th 2019
Galerie Jérôme Poggi, Paris

| *Marion Verboom* - solo show
Dec. 1st 2018 - Jan 19th 2019
Galerie Jérôme Poggi, Paris

| *Sophie Ristelhueber* - solo show
March 23rd - May 4th 2019
Galerie Jérôme Poggi, Paris

ART FAIRS

| **ARTBO (CO)**
Oct. 25th - 28th 2018
Sidival Fila

| **MATERIAL ART FAIR (MX)**
Feb. 6th - 10th 2019
Group show

| **ARCOmadrid (ES)**
Feb. 27th - March 3rd 2019
Marion Verboom

| **ART BASEL MIAMI (US)**
Dec. 6th - 9th 2018
Kapwani Kiwanga

| **1:54 Marrakech (MA)**
Feb. 21st - 24th 2019
Djamel Tatah

| **The Armory Show (US)**
March 3th - 10th 2019
Nikita Kadan & Kapwani Kiwanga

ARTISTS

| Babi Badalov (AZ, 1959)
| Fayçal Baghriche (DZ/FR, 1972)
| Anna-Eva Bergman (NO/FR, 1909–1987)
| Maxime Bondu (FR, 1985)
| Julien Crépieux (FR, 1979)
| Larissa Fassler (CA, 1975)
| Sidival Fila (BR, 1962)
| Yona Friedman (HU, 1923)
| Nikita Kadan (UA, 1982)

| Kapwani Kiwanga (CA/FR, 1978)
| Bertrand Lamarche (FR, 1966)
| Wesley Meuris (BE, 1977)
| Sophie Ristelhueber (FR, 1949)
| Société Réaliste (FR/HU, 1982/1972)
| Djamel Tatah (FR, 1959)
| Georges Tony Stoll (FR, 1955)
| Marion Verboom (FR, 1983)
| Kees Visser (NL, 1948)