

Manuel Mathieu

Portfolio

Table of Contents

BIOGRAPHY _____ p. 3 - 4

EXHIBITIONS _____ p. 5 - 22

WORKS _____ p. 23 - 63

Paintings

Mosaics

Works on paper

Ceramics

PUBLICATIONS _____ p. 73 - 75

CONTACTS _____ p. 76



Manuel Mathieu (born in 1986 in Port-au-Prince, Haiti) is a multidisciplinary artist working across painting, sculpture, installation, video, and olfactory art. His work explores themes such as historical violence, erasure, and cultural approaches to physicality, nature, and spiritual heritage. Manuel Mathieu's interests are partly shaped by his childhood in Haiti and by his experience of immigrating to Montreal at the age of 19. Moving fluidly between these contexts and drawing on numerous historical influences and traditions, he seeks meaning through a spiritual or asemic mode of appearance.

Through a distinctive abstract visual language, he creates immersive, phenomenological works in which amorphous forms transform and dissolve, giving rise to emotional and psychological landscapes. Rather than “creating,” he approaches art as a process of discovery, allowing the work to retain its autonomy and function as a space of collective consciousness. His practice aims to evoke invisible and often unrepresentable energies (intimate, chaotic, and spiritual) that shape human experience. Drawing from a wide range of subjects, Manuel Mathieu's practice combines his sensitivity with his formal artistic training.

The **PHI Foundation for Contemporary Art** (Montreal) presented a major solo exhibition of his work in March 2026. His work is included in the **61st International Art Exhibition - La Biennale di Venezia**, both in the International Pavilion and at the Arsenale, curated by Koyo Kouoh.

He is represented by four galleries internationally, Galerie Hugues Charbonneau, Montréal (CA), Galerie Pilar Corrias, London (UK), Galerie HdM, Beijing (CH) and Galerie Poggi, Paris (FR).

Manuel Mathieu's work has been widely exhibited internationally in major private and public institutions, including :

- **Musée des beaux-arts de Montréal, Montreal (CA)**
- **The Power Plant Contemporary Art Gallery, Toronto (CA)**
- **Museum of Contemporary Art North Miami, Miami (US)**
- **Saint Louis Art Museum, St. Louis (US)**
- **De La Warr Pavilion, Bexhill-on-Sea (UK)**
- **Longlati Foundation, Shanghai (CN)**
- **K11 Art Foundation, Hong Kong (CN)**
- **MacKenzie Art Gallery, Regina (CA)**
- **Owens Art Gallery, Sackville (CA)**
- **Art Gallery of Alberta, Edmonton (CA)**
- **Art Gallery of Windsor, Windsor (CA)**
- **ICA Plug In Institute of Contemporary Art, Winnipeg (CA)**
- **Z33 House for Contemporary Art, Hasselt (BE)**
- **Kunstmuseum Stuttgart, Stuttgart (DE)**
- **Perez Art Museum Miami, Miami (US)**
- **Musée d'art contemporain de Montréal, Montreal (CA)**
- **Musée des beaux-arts du Canada, Ottawa (CA)**
- **Le Magasin Centre national d'art contemporain, Grenoble (FR)**
- **Consortium Museum, Dijon (FR)**

The artist has received numerous awards and distinctions, and has participated in major international biennials and public commissions, including:

- **Toronto Biennial of Art (CA)**
- **Seoul Mediacity Biennale (KR)**
- **Public commission for the Réseau express métropolitain, Montréal (CA)**
- **Recipient of the Ordre des arts et des lettres du Québec (2025)**
- **Recipient of the King Charles III Coronation Medal (2024)**
- **Best Short Film Prize, International Festival of Films on Art (2023)**

He has also undertaken several international residencies and academic engagements, including:

- **Art Explora, Paris (FR)**
- **Akademie Schloss Solitude (DE)**
- **Joyner Giuffrida Collection, Sonoma (US)**
- **Lectures and talks at institutions including the Royal College of Art (UK), Concordia University (CA), and Emily Carr University of Art and Design (CA)**

Exhibitions

Selection

2020 — 2025

Fondation PHI (CA), 2025

Manuel Mathieu: Unity in Darkness, 2025-2026 © PHI, photo: document original

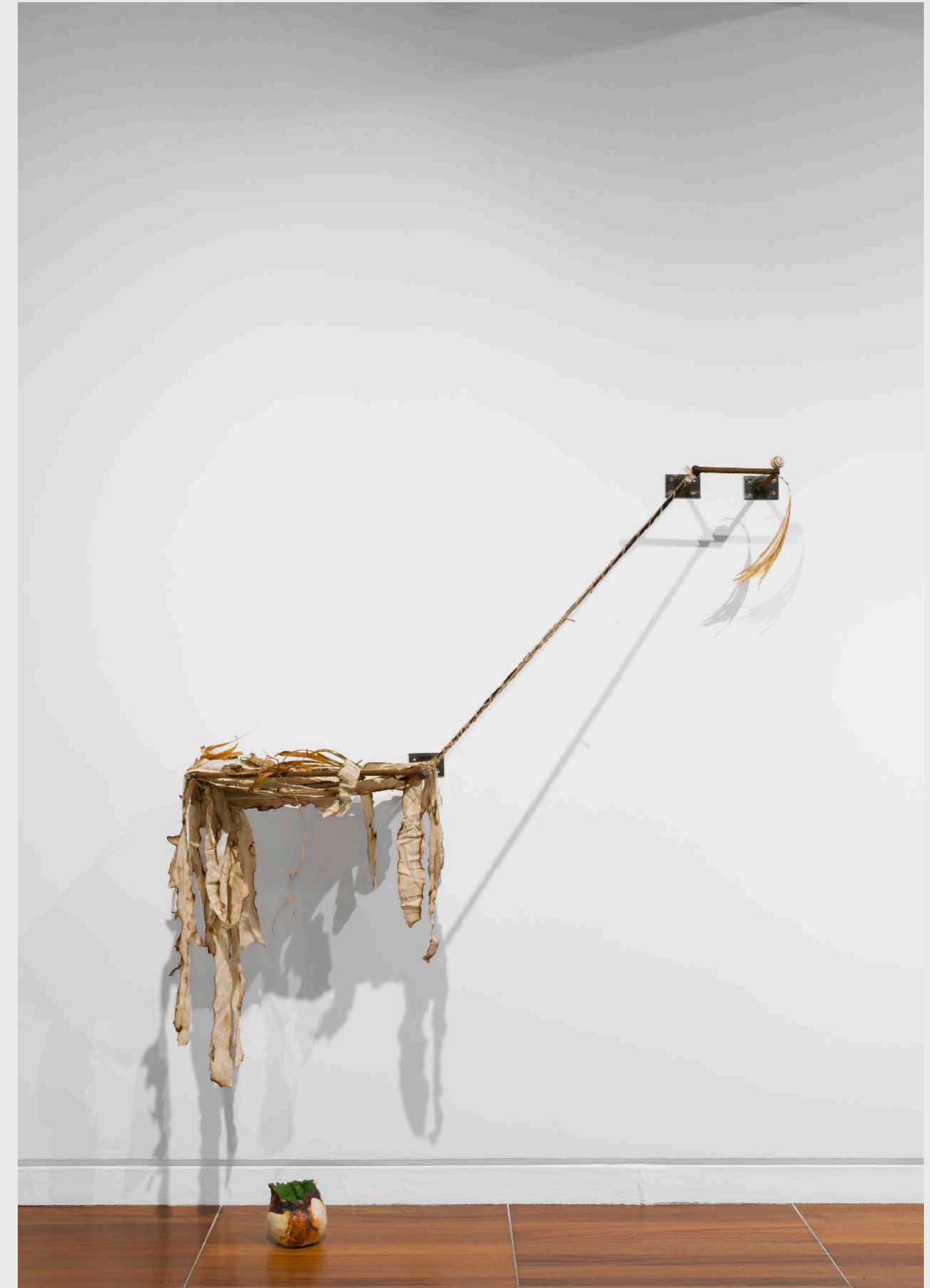
The work of Manuel Mathieu manifests itself through a deep connection with the hidden and suppressed areas of the body, mind, and soul. His shamanistic approach involves a state of surrender from which his distinctive visual language emerges, to interrogate the invisible forces that shape our world and affect our individual and collective lives. In constant dialogue with themes such as physicality, invisibility, and spirituality, Mathieu explores the subjects of historical violence, erasure, and trauma in order to access healing, resilience, and freedom for all.

Taking full possession of PHI's 451 Saint-Jean Street building, *Unity in Darkness* is the artist's most comprehensive exhibition to date. In addition to the presentation of recent paintings, drawings, and ceramics, this exhibition features a brand new sculptural and video installation as well as works that expand his multidisciplinary practice to include a mosaic, and his most recent foray into the exploration of scents with a large-scale, immersive olfactory installation.

The title of the exhibition is taken from his latest video work, situated within the heart of the building. Filmed in a single shot, a flaming match flares and almost burns out before being ignited by another match, which then passes its flame to another match, and so on, again and again. This perpetual dance becomes a gesture of solidarity and determination towards our common survival in the face of real danger. The installation also consists of a multitude of spherical ceramic works which have become a signature element of Mathieu's artistic vocabulary. Placed throughout the space, these works gaze at us like hundreds of eyes that simultaneously witness our vulnerability while also serving as talismans of protection. Made together with the many hands of the PHI team, this collaborative process underscores the notion of teamwork and community. The imagery of the flame along with the sculptural installation serve as a metaphor for the power of individual action that can nurture a universal consciousness to keep hope and resistance alive, in order to confront the harsh reality of our many global challenges.

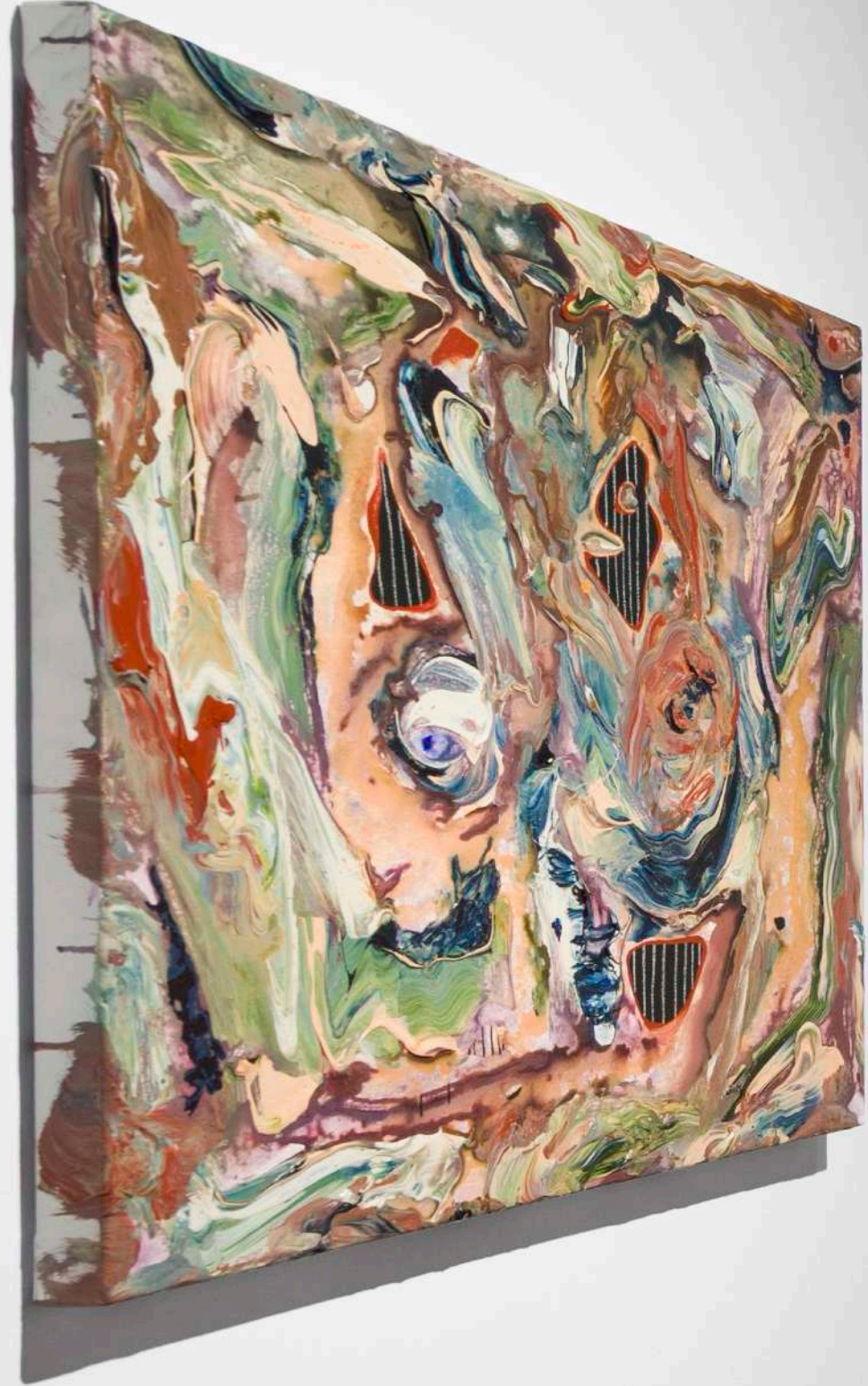
Unity in Darkness invites the public on an introspective journey that may elevate mindfulness and care for ourselves and each other. Undulating both conceptually and energetically, *Unity in Darkness* asks us to let go in order to connect.

Curator : Cheryl Sim, PHI



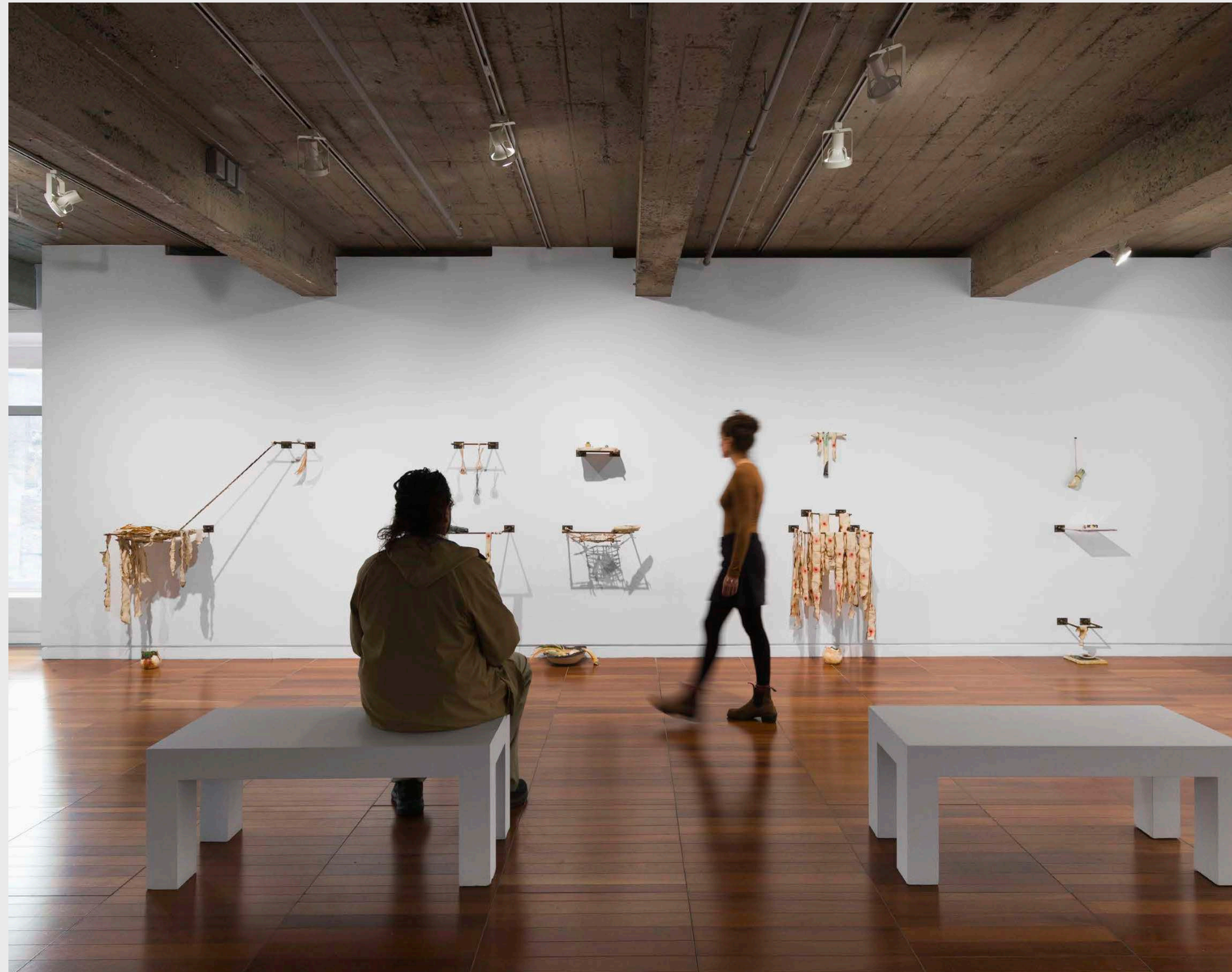
Fondation PHI (CA), 2025

Manuel Mathieu: Unity in Darkness, 2025-2026 © PHI, photo: document original



Fondation PHI (CA), 2025

Manuel Mathieu: *Unity in Darkness*, 2025-2026 © PHI, photo: document original



Fondation PHI (CA), 2025

Manuel Mathieu: *Unity in Darkness*, 2025-2026 © PHI, photo: document original



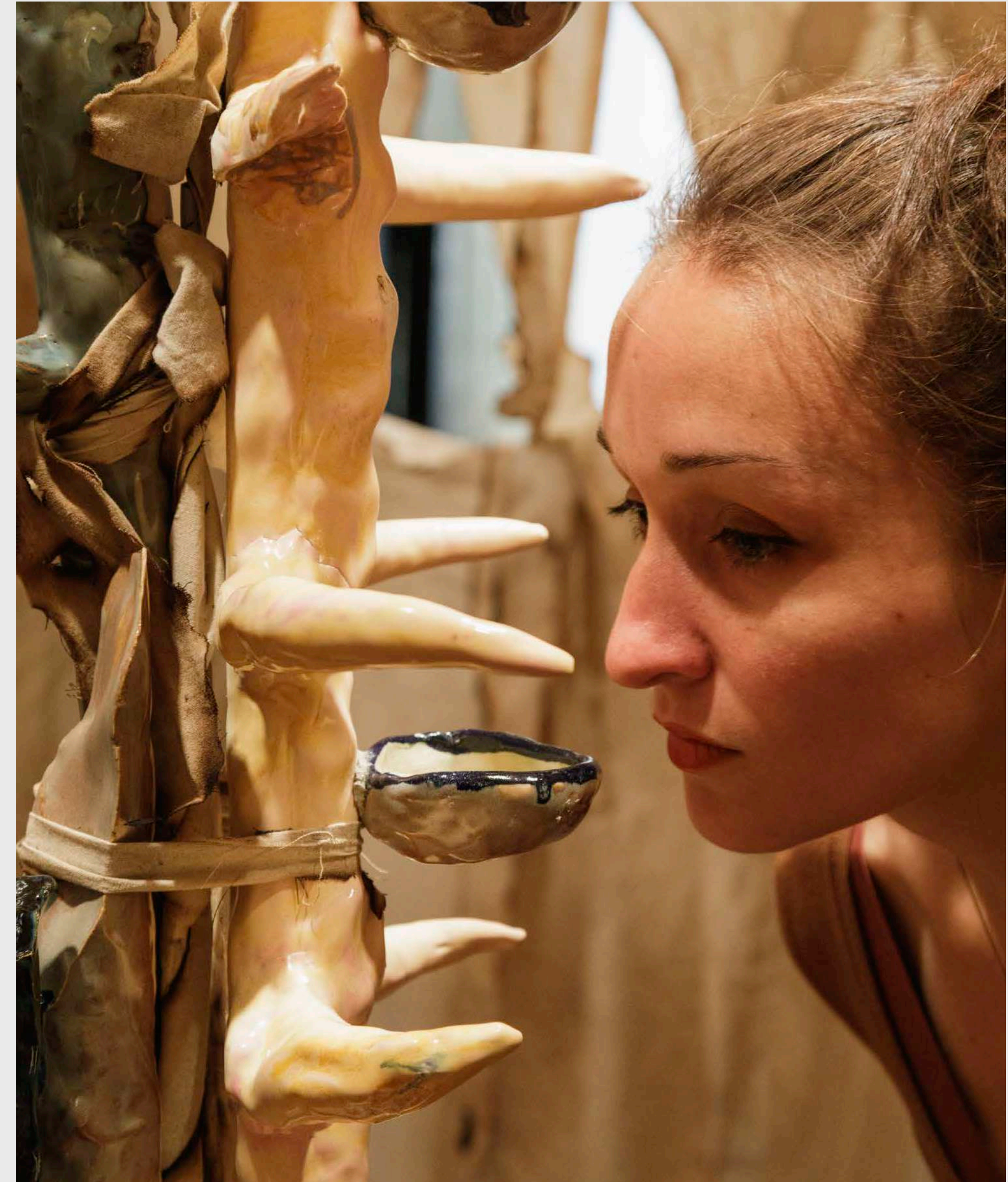
Fondation PHI (CA), 2025

Manuel Mathieu: *Unity in Darkness*, 2025-2026 © PHI, photo: document original



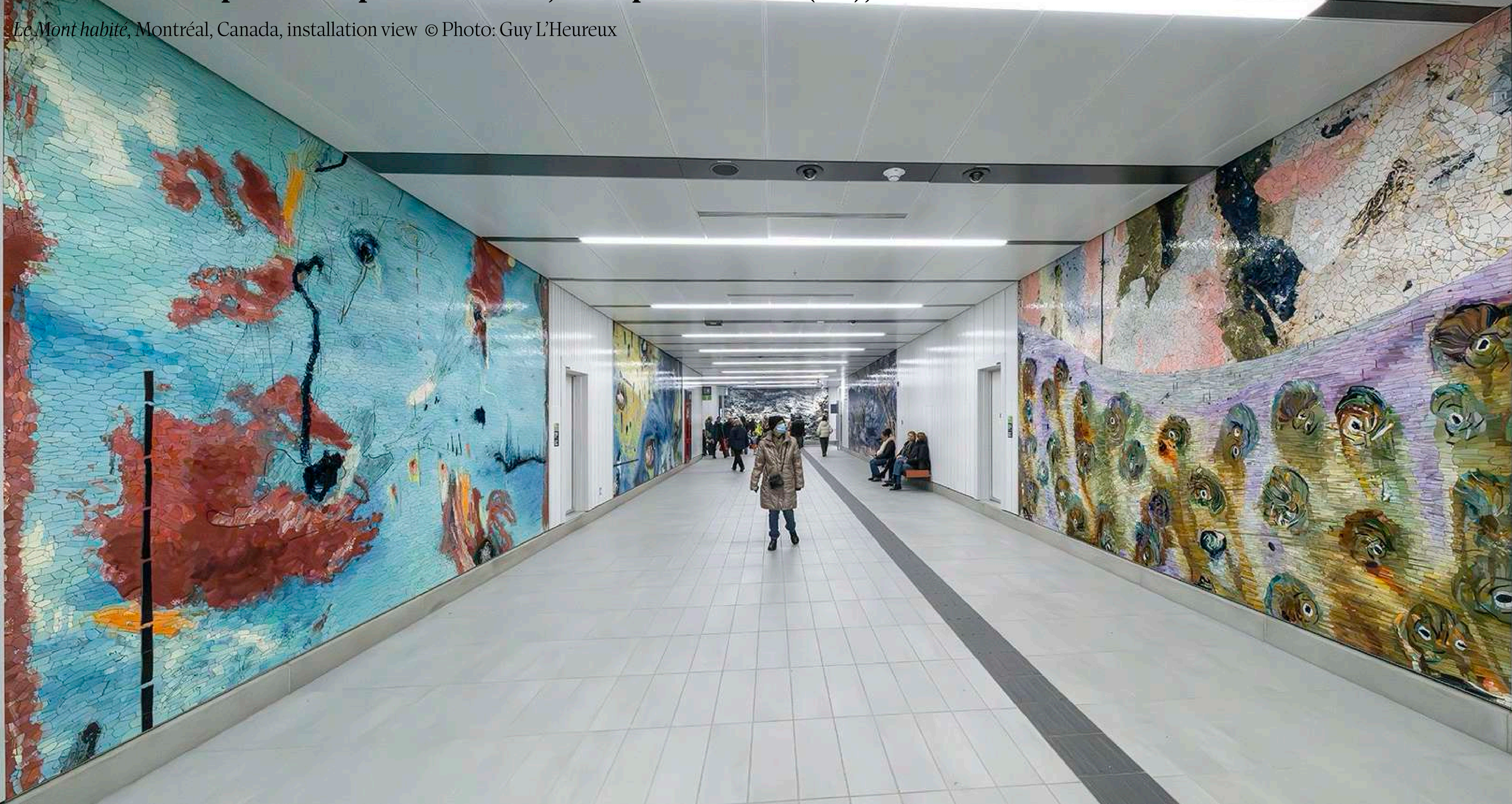
Fondation PHI (CA), 2025

Manuel Mathieu: *Unity in Darkness*, 2025-2026 © PHI, photo: document original



Montreal Metropolitan Express Network, Montpetit Station (CA), 2025

Le Mont habité, Montréal, Canada, installation view © Photo: Guy L'Heureux



Montreal Metropolitan Express Network, Montpetit Station (CA), 2025

Le Mont habité, Montréal, Canada, installation view © Photo: Guy L'Heureux



Jeffrey Deitch Gallery, Los Angeles, (USA), 2025

The Abstract Future (group show), Los Angeles, United State, exhibition view © Photo: Charles White



Art Toronto, (CA), 2025

Installation view, Art Toronto, 2025. Manuel Mathieu, *Shhrine*, 2025 © Galerie Hugues Charbonneau, photo : Jean-Michael Seminaro

Shhrine is an immersive olfactive installation by Manuel Mathieu, conceived as a sensory extension of his broader research into memory, spirituality, and embodied experience. Presented in 2024 at Art Toronto in parallel to its counterpart at PHI, the work features a new selection of scents developed specifically for the fair context.

Blurring the line between sculpture, atmosphere, and ritual, *Shhrine* invites viewers into an intimate encounter where fragrance becomes a language of presence, offering a space of contemplation shaped as much by what is felt as by what is seen.



Museum Of Contemporary Art North Miami (USA), 2024

Dwelling on the Invisible, Miami, United State, exhibition view, (Solo show)



Toronto Biennale of Art (CA), 2024

Pendulum, installation view © Photo : Gallery TPW



Pendulum (2024) is a newly commissioned two-screen film installation with sculptural elements. The film is Manuel's first cinematographic installation. The work depicts the search for an equilibrium between the past and an uncertain future. A woman knowledge keeper carries on her shoulders her most precious legacy: the liberation of her soul. This legacy sets in motion a spiritual choreography in which a group of men master their own freedom as they confront the complexities of their humanity.

Manuel Mathieu is a multidisciplinary artist who explores themes of historical violence, erasure, and spiritual legacy through a unique abstract visual language. His art, influenced by his Haitian upbringing and immigration to Montréal, challenges traditional norms and conveys meaning through spiritual apparition. Manuel's approach to his work is more about discovering than creating, which allows it to contribute to a shared consciousness.

Manuel Mathieu

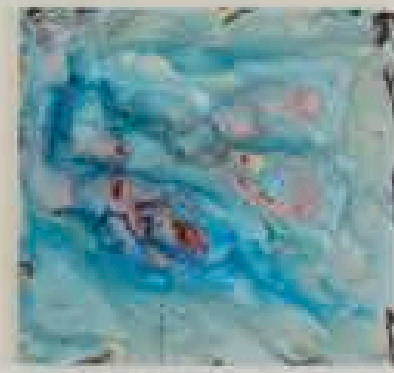
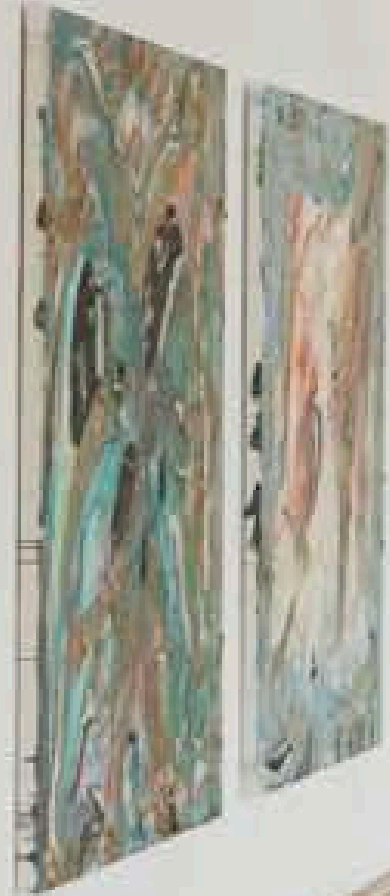
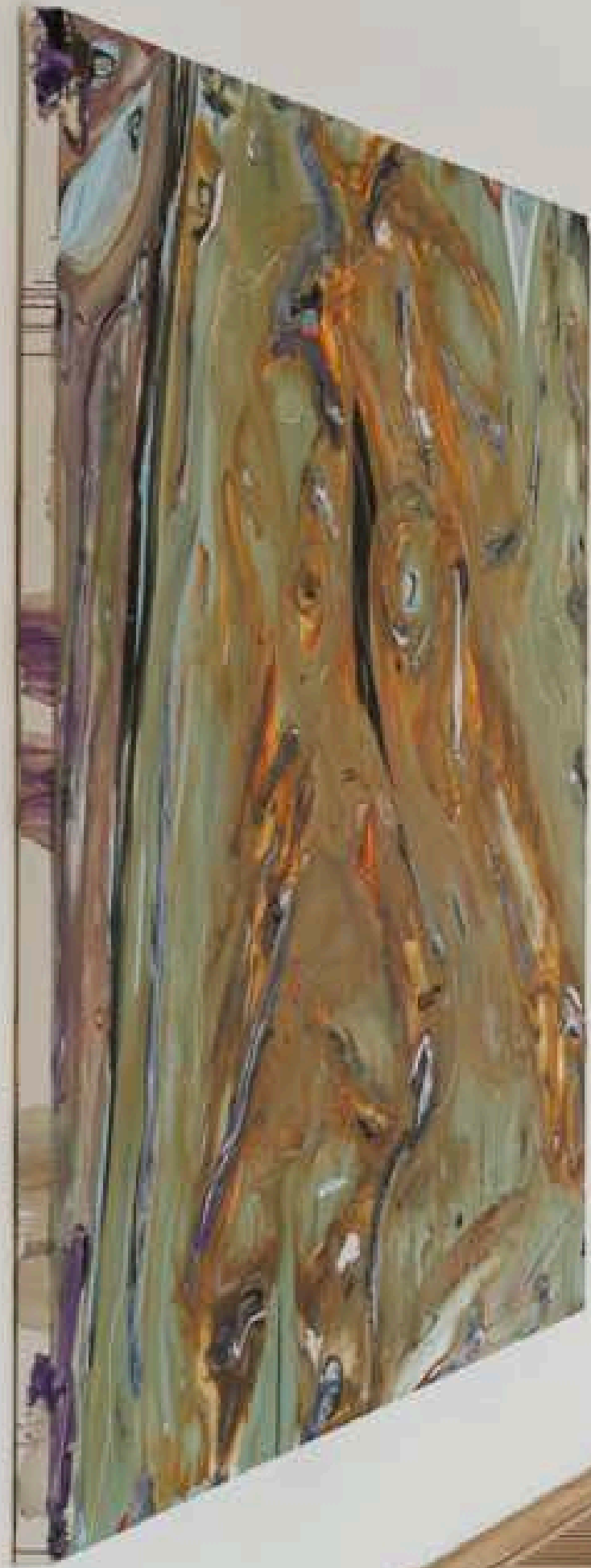
Pendulum, 2023

Film, 11 minutes, color with sound

Winner of the Best Short Film Award, International Festival of Films on Art (FIFA) 2023

De La Warr Pavillion (EN), 2024

The End of Figuration, De la Warr Pavilion, Bexhill-on-Sea, exhibition view © De la Warr Pavillion



De La Warr Pavillion (EN), 2024

The End of Figuration, De la Warr Pavilion, Bexhill-on-Sea, exhibition view © De la Warr Pavillion

The End of Figuration is Mathieu's first institutional solo exhibition in Europe and focuses on a series of new paintings and a site-specific fabric installation reaching through the centre of the gallery. The artist's mixing of mediums across painting, ceramics, and fabric is underpinned by a provocation: how might we conceive the end of figuration within art making, such that we see in a work only what we wish to find? In posing this question, he simultaneously highlights art's inevitable failure to capture reality alongside its potential to be an illuminating vehicle for processing our past and present experiences.

Mathieu's works can be seen as attempting to represent that which is often unrepresentable – the emotive, intimate, violent, and chaotic energies that charge our everyday; apparitions that crystallise and dissipate in the moments of our looking.



Fondation Longlati (CN), 2022

Silk Road Traveler, Lethe's Wanderer, Shanghai, China, exhibition view, (Solo show)



K11 Art Foundation (CN), 2022

Rising from Ashes, Hong Kong, exhibition view, (Solo show)



The Power Plant Contemporary Art Gallery (CA), 2020

World Discovered Under Other Skies, Toronto, Canada, exhibition view, (Solo show)



Paintings

Selection

2023 — 2026

Manuel Mathieu
Poetry in our Disappearance, 2023

Mixed media on canvas
172 x 182 cm
© .Kit





Manuel Mathieu

Poetry in our Disappearance, 2023

Mixed media on canvas

172 x 182 cm

© .Kit

Manuel Mathieu
Langue diamant 3, 2026

Mixed media on canvas
27 x 35 cm
© Guy L'Heureux





Manuel Mathieu
Archive retrouvée, 2026

Mixed media on canvas
172 x 182 cm
© Guy L'Heureux

Manuel Mathieu
Langue diamant 1, 2026

Mixed media on canvas
27 x 35 cm
© Guy L'Heureux





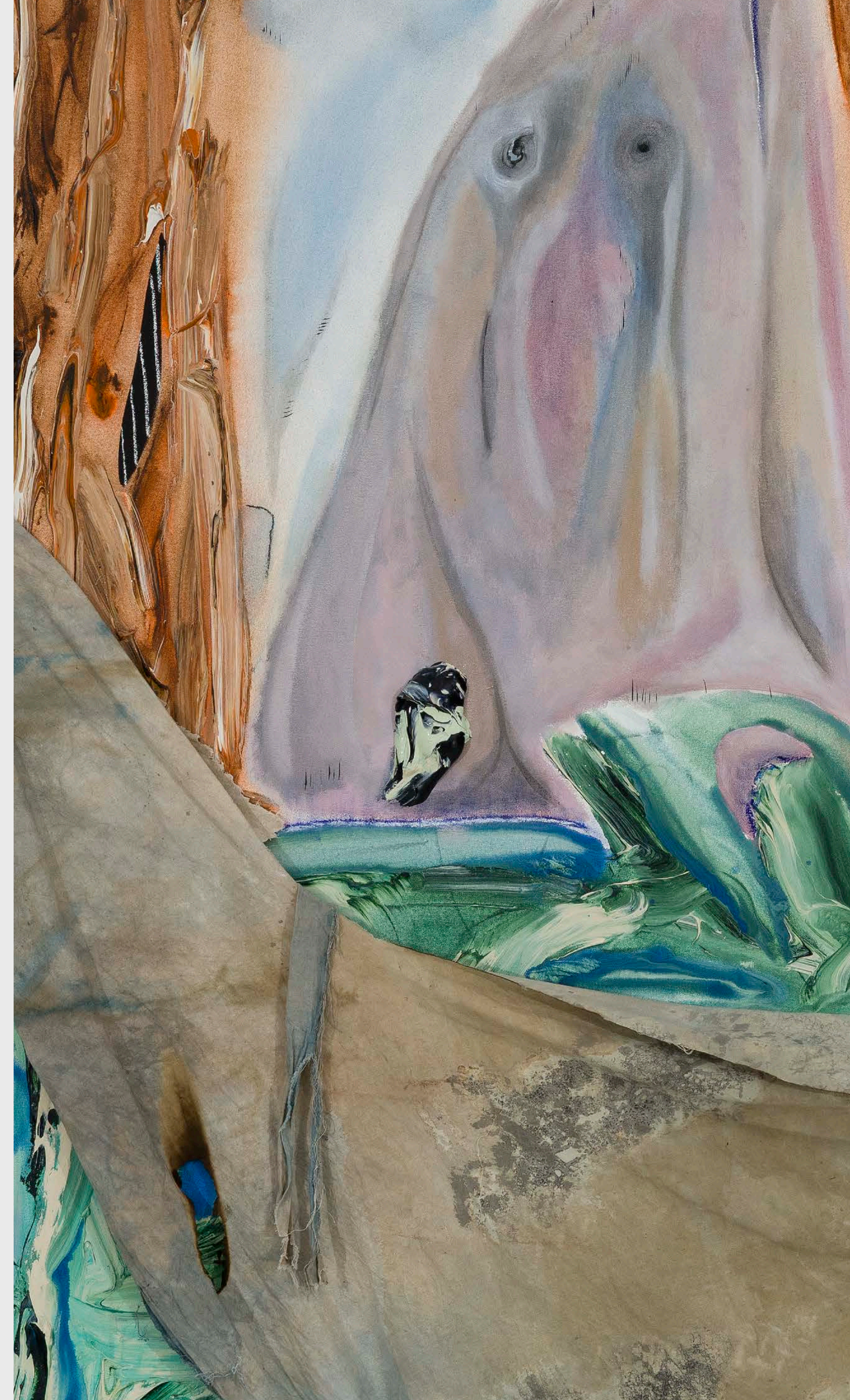
Manuel Mathieu

Apparition nocturne : Hamac, 2026

Mixed media on canvas

172 x 182 cm

© Guy L'Heureux





Manuel Mathieu
Pensée rouge 2, 2025

Mixed media on canvas
101 x 101 cm
© .Kit



Manuel Mathieu
Pensée rouge 2, 2025

Mixed media on canvas
101 x 101 cm
© .Kit



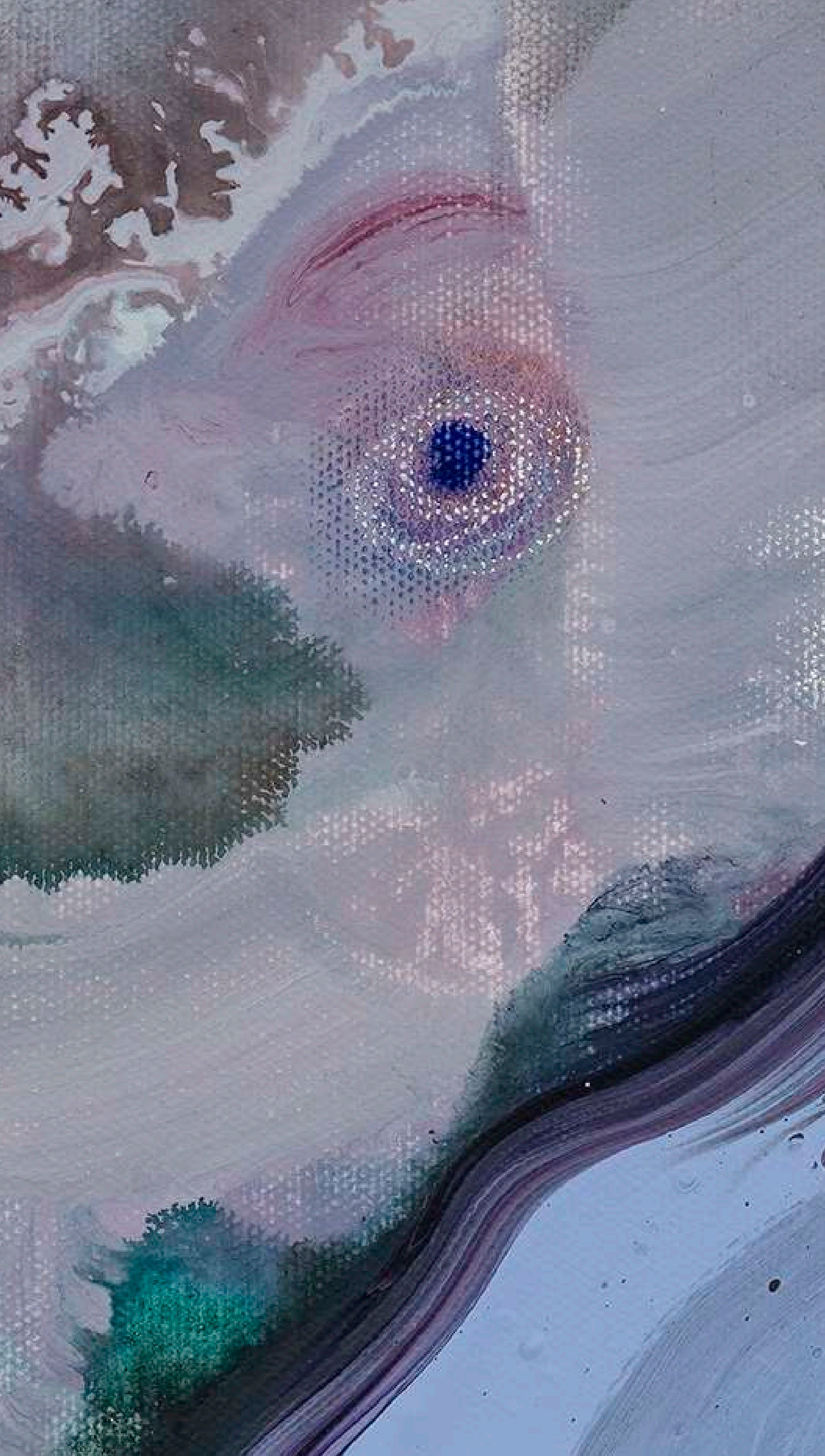
Manuel Mathieu

Dessin dessin dessin, 2025

Mixed media on paper

84 x 70 cm

© Guy L'Heureux



Manuel Mathieu
Dans la vague, 2025

Mixed media on canvas
35 x 30 cm
© Guy L'Heureux





Manuel Mathieu
Archive retrouvée 2, 2026

Mixed media on canvas
91 x 76 cm
© Guy L'Heureux



Manuel Mathieu
Abundance, 2026

Mixed media on canvas
91 x 76 cm
© Guy L'Heureux



Manuel Mathieu
Paysage sacré, 2024

Mixed media on canvas
76.2 x 91.5 cm
© Guy L'Heureux



Manuel Mathieu
Paysage sacré, 2024

Mixed media on canvas
76.2 x 91.5 cm
© Guy L'Heureux





Manuel Mathieu

Pensée rouge 3, 2025

Mixed media on canvas

30 x 35 cm

© Guy L'Heureux

Manuel Mathieu
Si on pouvait, 2025

Mixed media on canvas
30 x 35 cm
© Guy L'Heureux





Manuel Mathieu
Earth's Whisperer, 2025

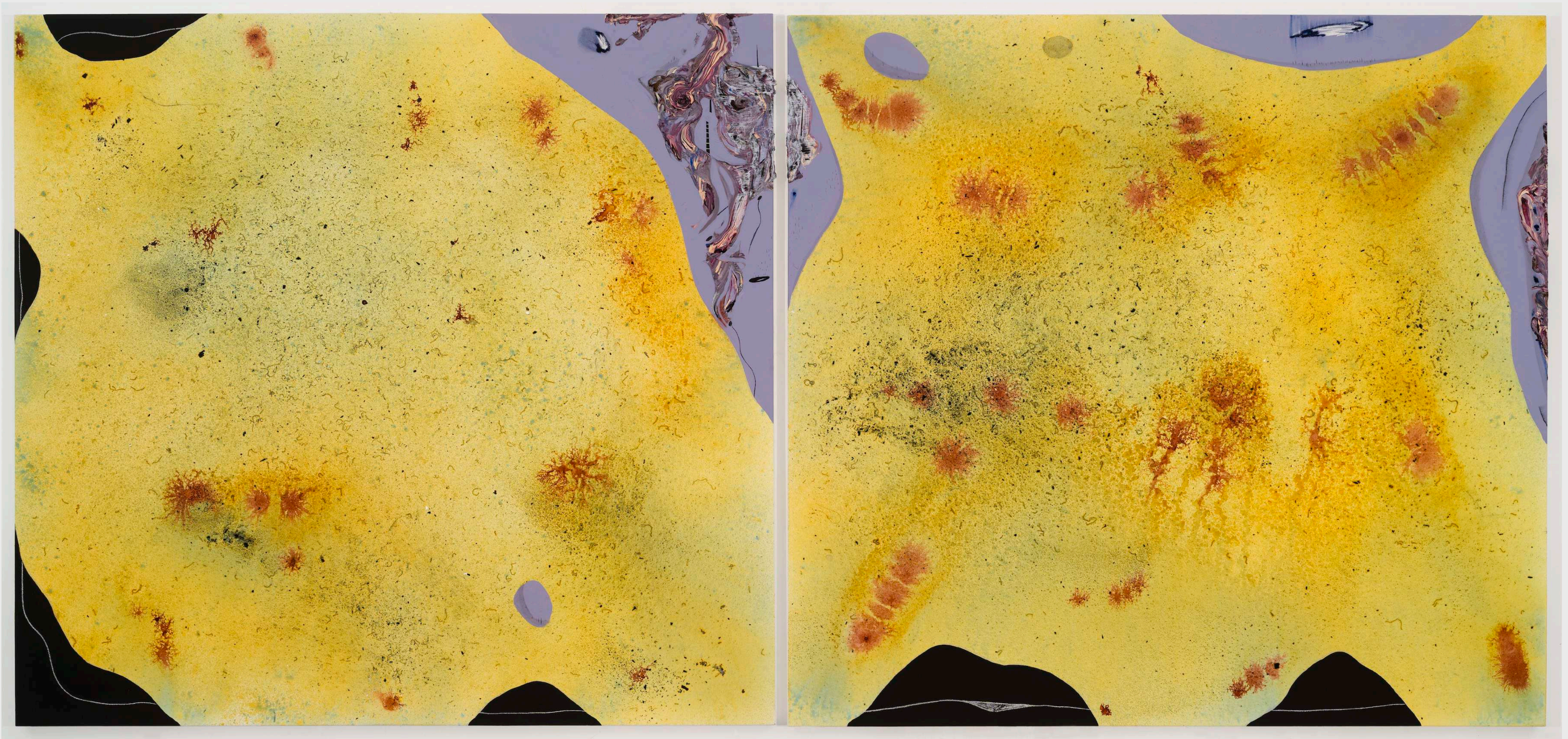
Mixed media on canvas
101 x 101 cm
© Guy L'Heureux



Manuel Mathieu
The Veil, 2025

Mixed media on canvas, burnt natural cotton,
76 x 91 cm
© Guy L'Heureux





Manuel Mathieu

Borders, 2024

Mixed media on canvas.

190 x 203 cm

© Guy L'Heureux



Manuel Mathieu
In the Heart of the Revolution, 2025

Mixed medias on canvas
182 x 172 cm
© Guy L'Heureux



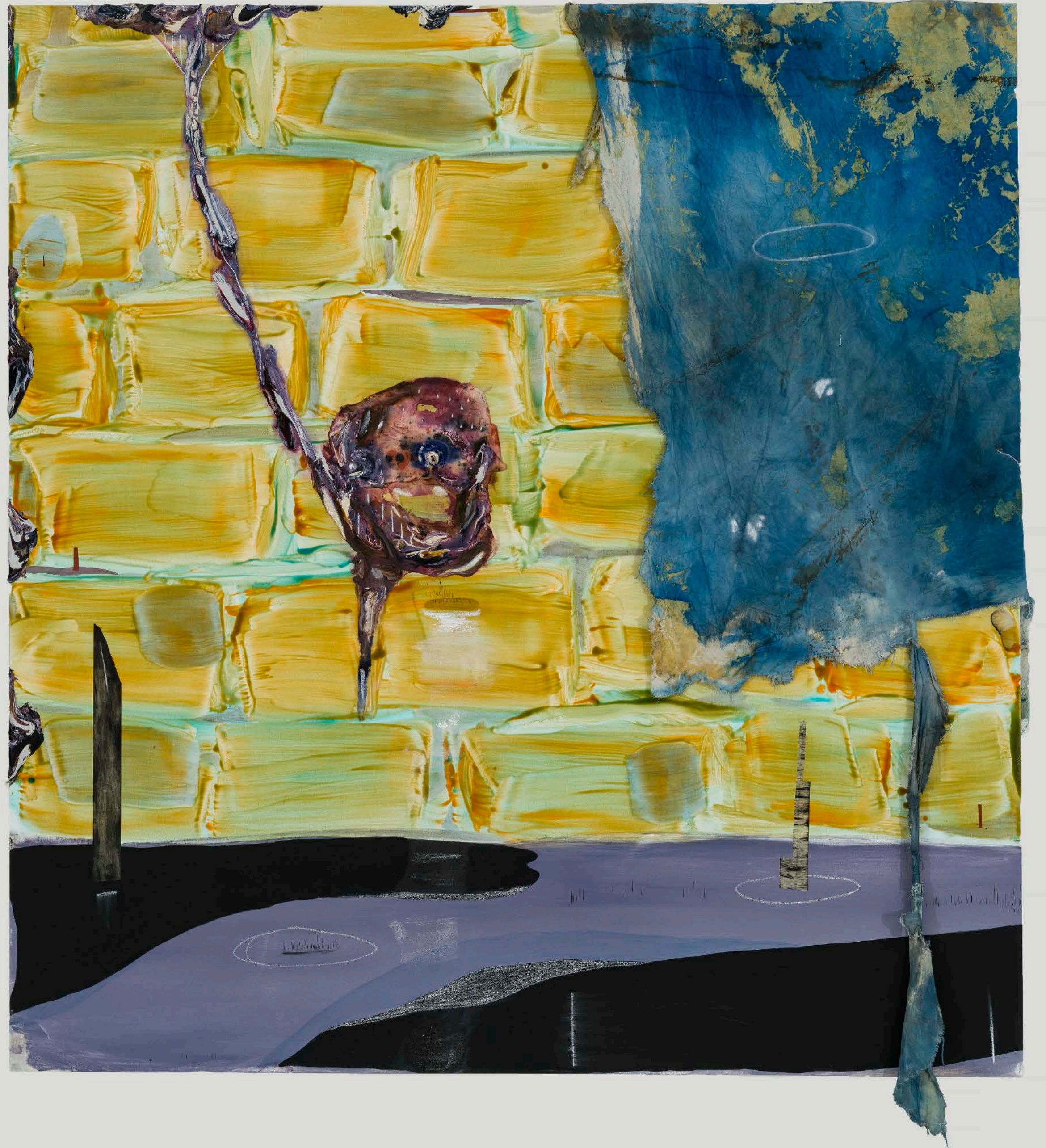


Manuel Mathieu
Holding on a thread, 2024

Mixed media on canvas
172 x 182 cm
© Guy L'Heureux

Manuel Mathieu
Le Cordon, 2026

Mixed media on canvas,
72 x 68 cm
© Guy L'Heureux



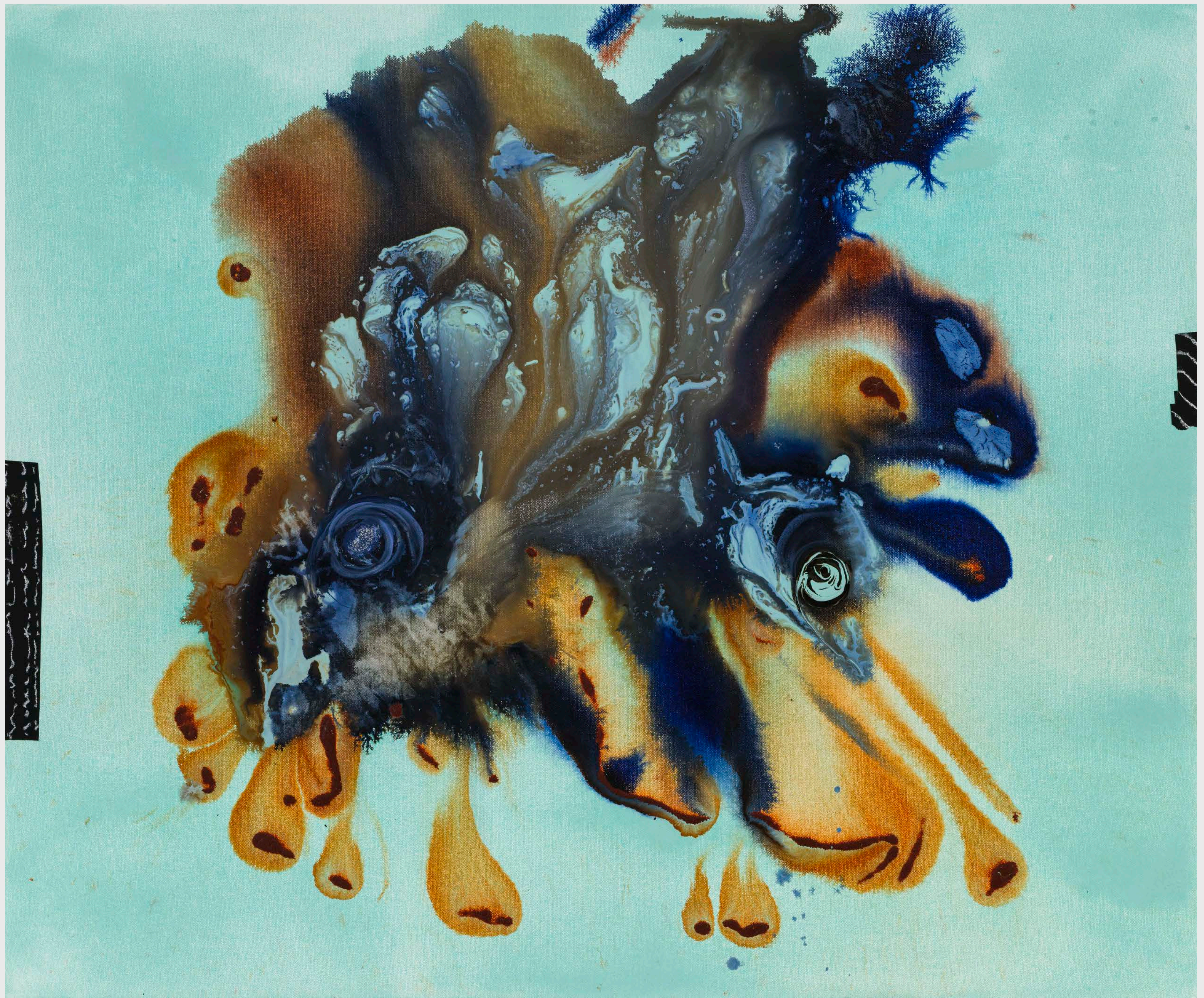


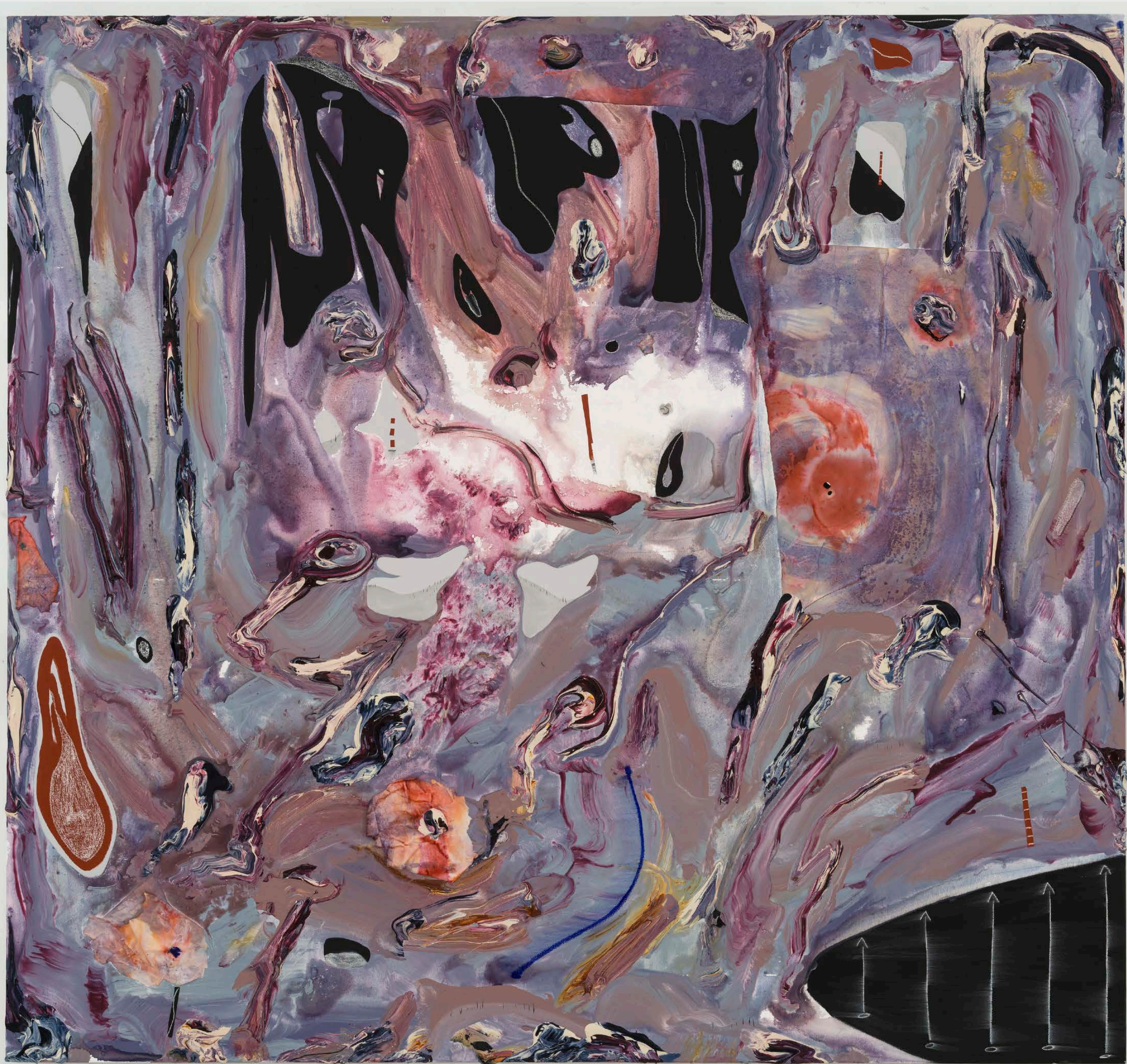
Manuel Mathieu
Mardi Gras, 2024

Mixed media on canvas
24 x 30 cm
© Guy L'Heureux

Manuel Mathieu
Gestalt, 2026

Mixed media on canvas
76 x 91 cm
© Guy L'Heureux





Manuel Mathieu
Géographie de la pensée, 2024

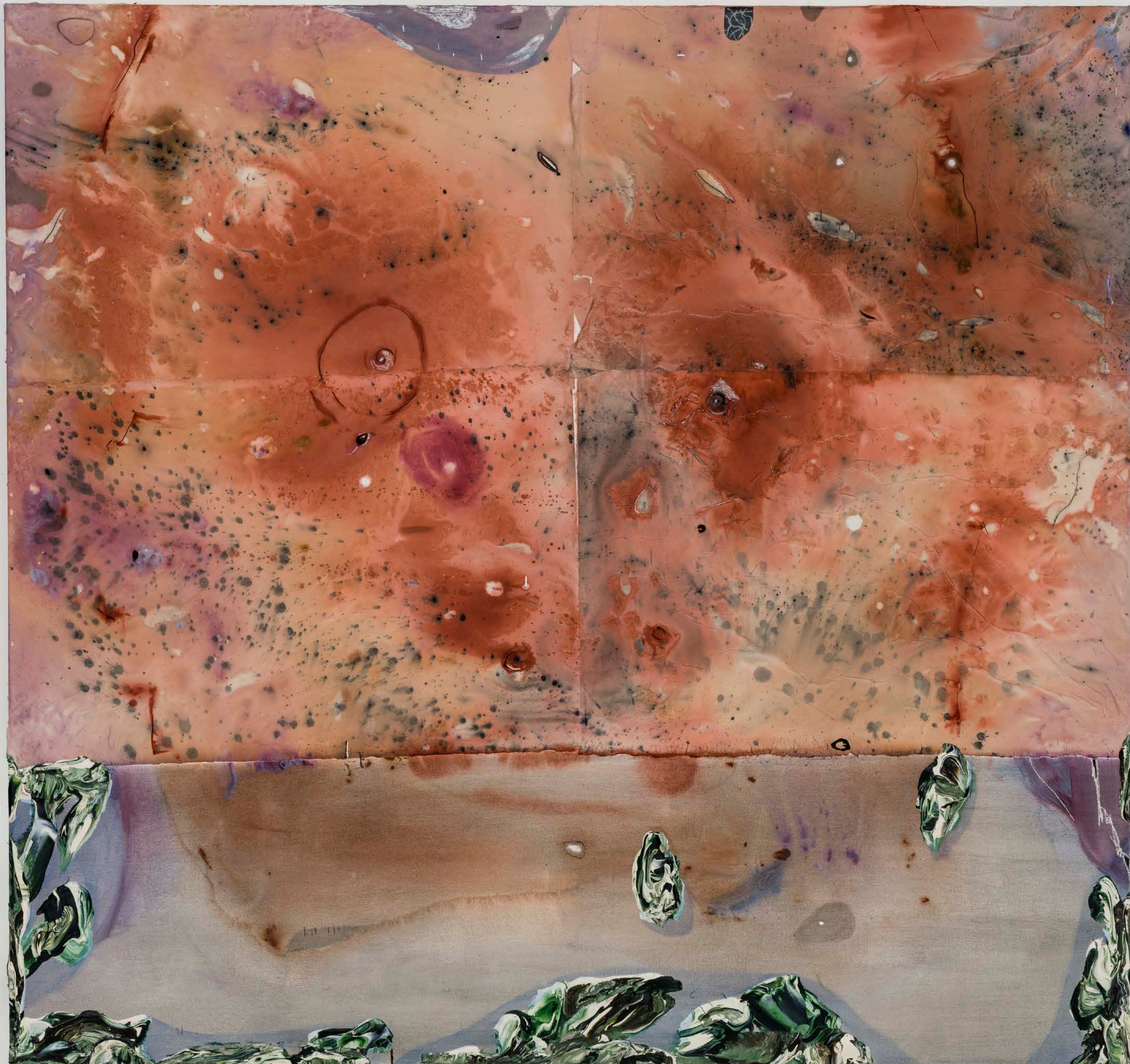
Mixed media on canvas
190 x 203 cm
© Guy L'Heureux



Manuel Mathieu
Life in a Second, 2024

Mixed media on canvas
182 x 172 cm
© Guy L'Heureux



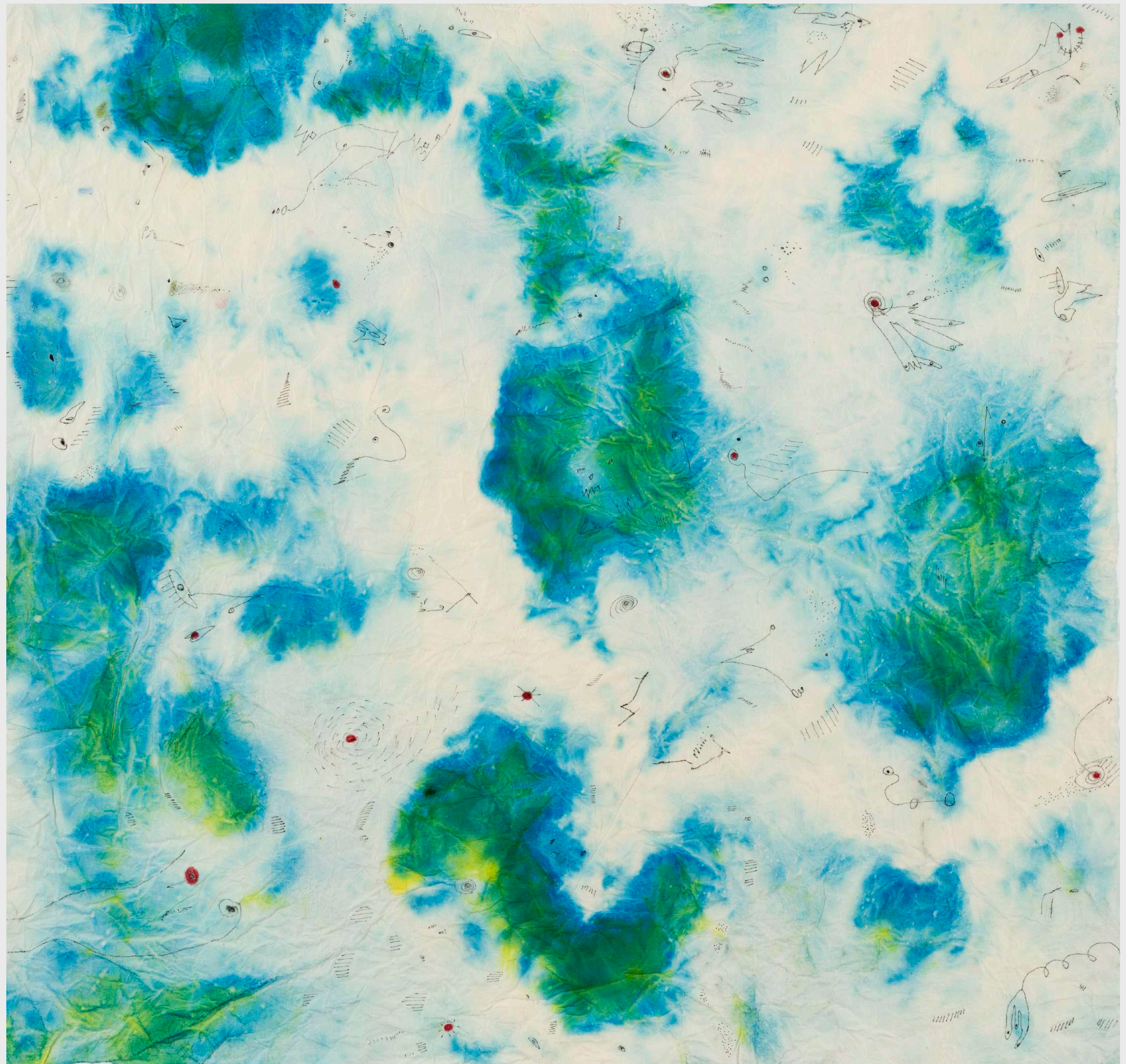


Manuel Mathieu
Self Presentation 2, 2025

Mixed media on canvas
190 x 203 cm
© Guy L'Heureux

Manuel Mathieu
Red Signal, 2024

Mixed media on canvas.
48 x 50 cm
© Guy L'Heureux





Manuel Mathieu
Les désenchantés, 2024

Mixed media on canvas
90 x 110 cm
© Guy L'Heureux



Manuel Mathieu

Untitled, 2025

Mixed media on canvas

182 x 172 cm

© Guy L'Heureux



Manuel Mathieu
Anatomy, 2024

Mixed media on canvas,
72 x 78 cm
© Guy L'Heureux

Mosaics

Selection

2025 — 2026



Manuel Mathieu
Smoke Signal, 2026

Mosaic on metal frame
61 x 61 cm
© Guy L'Heureux



Manuel Mathieu
Regard tracé, 2026

Mosaic on metal frame
61 x 61 cm
© Guy L'Heureux



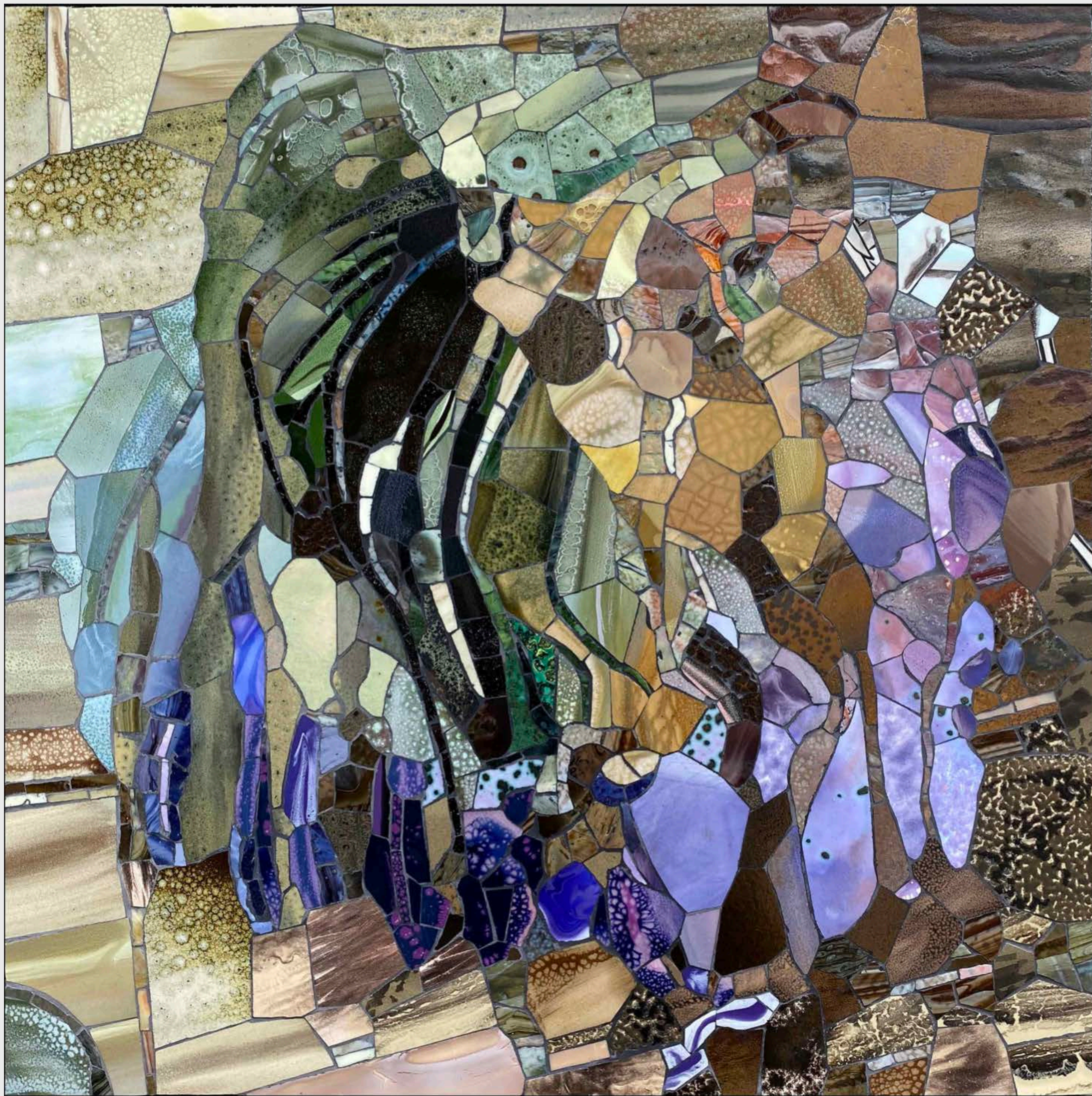
Manuel Mathieu
Autoportrait, 2025

Mosaic on metal structure
61 x 61 cm
© Guy L'Heureux



Manuel Mathieu
Untitled, 2025

Mosaic on metal frame
61 x 61 cm
© Guy L'Heureux



Manuel Mathieu

Untitled, 2025

Mosaic on metal frame

61 x 61 cm

© Guy L'Heureux



Manuel Mathieu

Untitled, 2025

Mosaic on metal frame

61 x 61 cm

© Guy L'Heureux



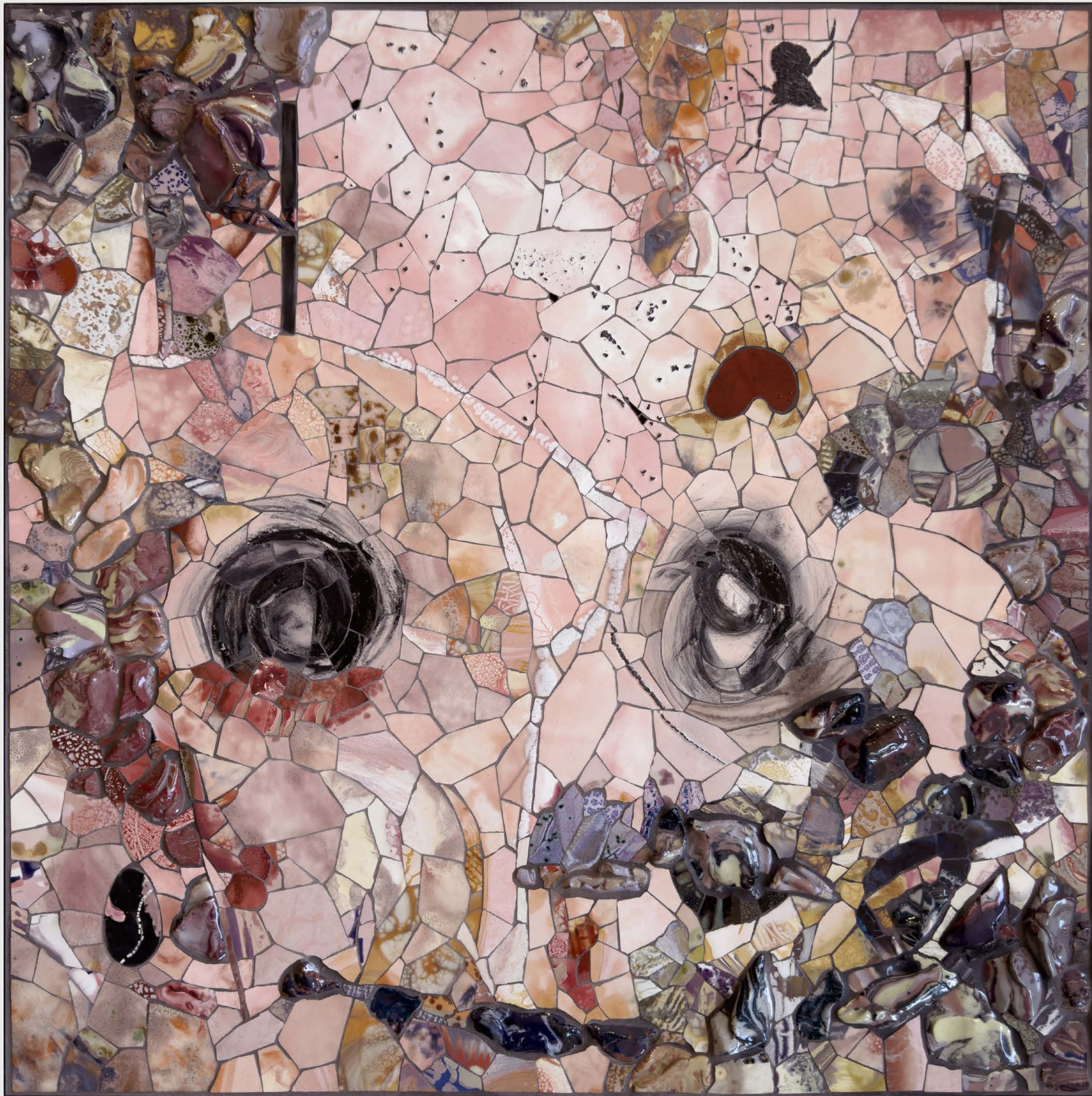
Manuel Mathieu

Untitled, 2025

Mosaic on metal frame.

61 x 61 cm

© Guy L'Heureux



Manuel Mathieu

Enigma, 2025

Mosaic on metal structure

61 x 61 cm

© Guy L'Heureux

Works on paper

Selection

2024 — 2026

Manuel Mathieu
The Singer in the Mountain, 2024
Watercolor, colored pencil and charcoal
16 x 20 cm
© Guy L'Heureux





Manuel Mathieu

Au repos, 2026

Print

Needlework - two passes: drypoint, etching, aquatint, sugar-lift and spit-bite

36 x 49 cm

Edition of 25

© Guy L'Heureux



1/25

M26

Manuel Mathieu

Autoportrait 26, 2026

Needlework - three passes: etching, aquatint and split bite

12 x 15 cm

Edition of 25

© Guy L'Heureux



Manuel Mathieu
Bad Hair Day, 2025

Etching on paper
17.7 x 26.7 cm
Edition of 35

Ceramics

Selection

2021 — 2022



Manuel Mathieu

The Flower, 2021

Ceramic
17.8 x 11.4 x 15.2 cm
© Guy L'Heureux



Manuel Mathieu
The Loss of Innocence, 2021

Mixed Media
40.6 x 5.1 x 3.8 cm
© Guy L'Heureux

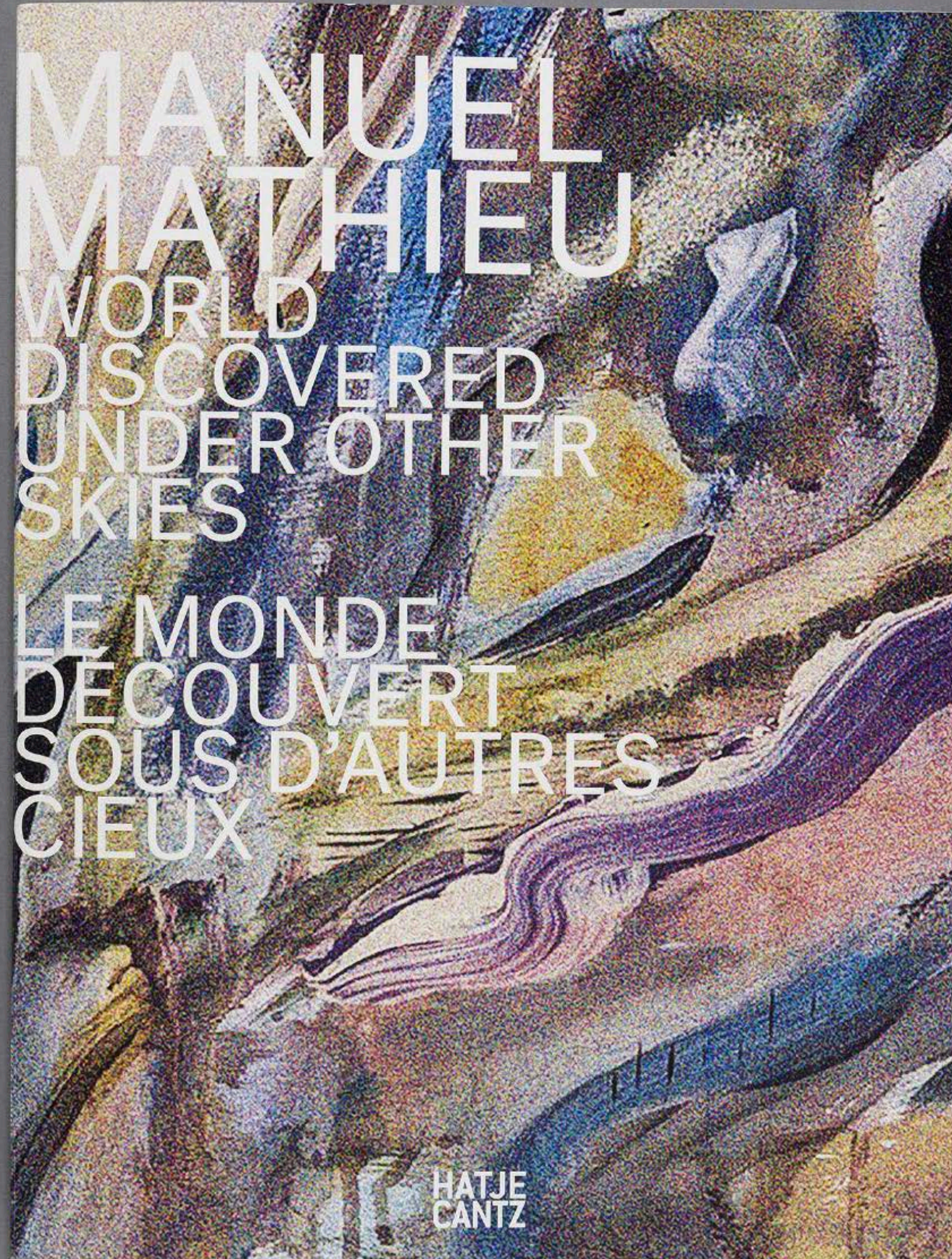


Manuel Mathieu
Untitled, 2022

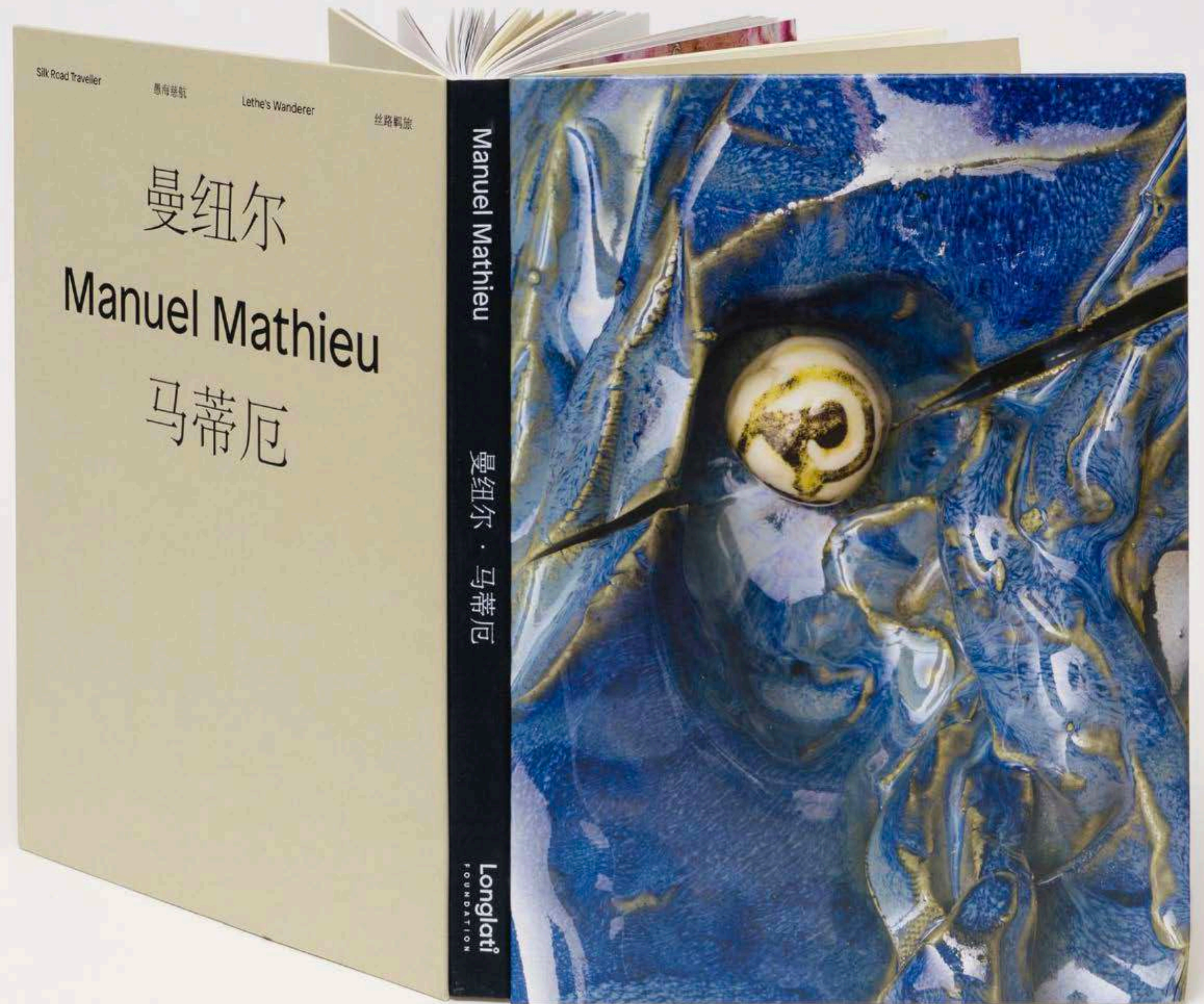
Ceramic
50.8 x 40.6 x 25.4 cm
© Guy L'Heureux

Publications

Selection



Manuel Mathieu : World Discovered Under Other Skies / Le Monde découvert sous d'autres cieux.
Toronto : Gaëtane Verna & The Power Plant, 2022
In English and French
120 pages



Manuel Mathieu: Silk Road Traveler, Lethe's Wanderer
Longlati Foundation, Pilar Corrias & HdM Gallery
Shanghai, China

CONTACT

Asta Keiller

a.keiller@galeriepoggi.com

GG